

Cynomolgus LRIG1 Protein

Cat. No. LRI-CM101

Description

Source	Recombinant Cynomolgus LRIG1 Protein is expressed from HEK293 with His tag at the C-Terminus. It contains Ala34-Thr792.
Accession	A0A2K5V8J9
Molecular Weight	The protein has a predicted MW of 84.16 kDa. Due to glycosylation, the protein migrates to 90-110 kDa based on Tris-Bis PAGE result.
Endotoxin	Less than 1EU per µg by the LAL method.
Purity	> 95% as determined by Tris-Bis PAGE

Formulation and Storage

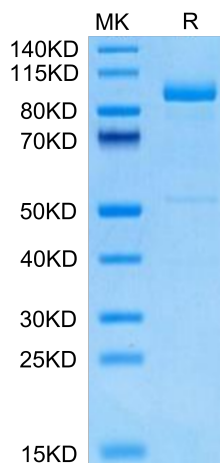
Formulation	Lyophilized from 0.22µm filtered solution in PBS (pH 7.4). Normally 8% trehalose is added as protectant before lyophilization.
Reconstitution	Centrifuge the tube before opening. Reconstituting to a concentration more than 100 µg/ml is recommended. Dissolve the lyophilized protein in distilled water.
Storage	-20 to -80°C for 12 months as supplied from date of receipt. -20 to -80°C for 3-6 months in unopened state after reconstitution. 2-8°C for 2-7 days after reconstitution. Recommend to aliquot the protein into smaller quantities for optimal storage. Please minimize freeze-thaw cycles.

Background

The leucine-rich repeats and immunoglobulin-like domains (LRIG)-1 is a tumor suppressor gene that belongs to the LRIG family. LRIG1 expression has prognostic significance in various human cancers. Somatic mutations, which are associated with a certain rate of response to targeted therapies, are ubiquitously found in human non-small cell lung cancer (NSCLC). LRIG1 was an independent prognostic factor for OS of NSCLC patients. LRIG1 in combination with other clinicopathological risk factors was a stronger prognostic model than clinicopathological risk factors alone.

Assay Data

Tris-Bis PAGE



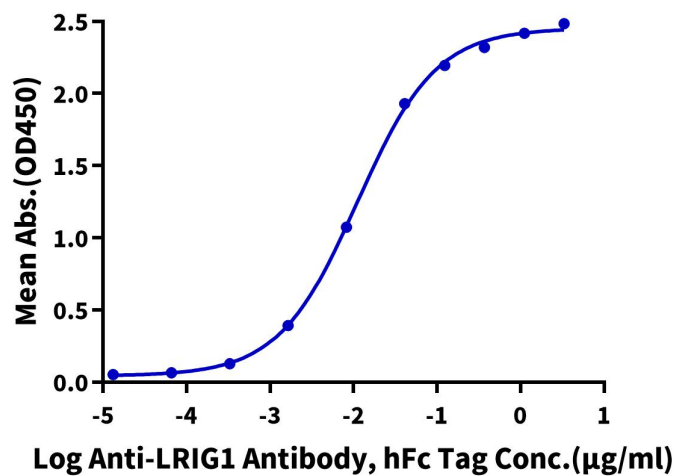
Cynomolgus LRIG1 on Tris-Bis PAGE under reduced condition. The purity is greater than 95%.

ELISA Data

Assay Data

Cynomolgus LRIG1, His Tag ELISA

0.2µg Cynomolgus LRIG1 , His Tag Per Well



Immobilized Cynomolgus LRIG1, His Tag at 2µg/ml (100µl/well) on the plate. Dose response curve for Anti-LRIG1 Antibody, hFc Tag with the EC50 of 11.6ng/ml determined by ELISA.