

# Human LRIG1 Protein

Cat. No. LRI-HM101

## Description

<b>Source</b>	Recombinant Human LRIG1 Protein is expressed from HEK293 with His tag at the C-Terminus. It contains Ala35-Ser779.
<b>Accession</b>	Q96JA1-1
<b>Molecular Weight</b>	The protein has a predicted MW of 83 kDa. Due to glycosylation, the protein migrates to 85-105 kDa based on Bis-Tris PAGE result.
<b>Endotoxin</b>	Less than 1EU per µg by the LAL method.
<b>Purity</b>	> 95% as determined by Bis-Tris PAGE

## Formulation and Storage

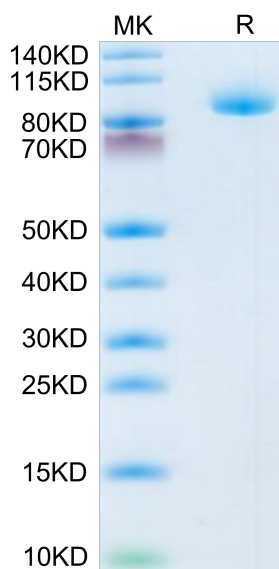
<b>Formulation</b>	Supplied as 0.22µm filtered solution in 50mM MES, 150mM NaCl, 1mM EDTA (pH 5.0).
<b>Storage</b>	Valid for 12 months from date of receipt when stored at -80°C. Recommend to aliquot the protein into smaller quantities for optimal storage. Please minimize freeze-thaw cycles.

## Background

The leucine-rich repeats and immunoglobulin-like domains (LRIG)-1 is a tumor suppressor gene that belongs to the LRIG family. LRIG1 expression has prognostic significance in various human cancers. Somatic mutations, which are associated with a certain rate of response to targeted therapies, are ubiquitously found in human non-small cell lung cancer (NSCLC). LRIG1 was an independent prognostic factor for OS of NSCLC patients. LRIG1 in combination with other clinicopathological risk factors was a stronger prognostic model than clinicopathological risk factors alone.

## Assay Data

### Bis-Tris PAGE

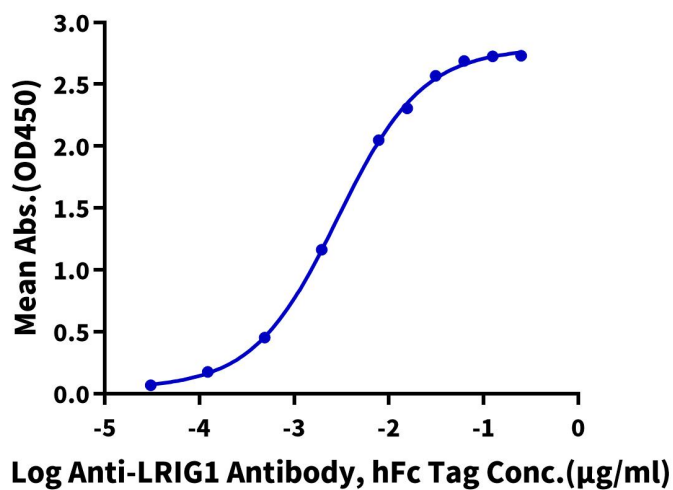


Human LRIG1 on Bis-Tris PAGE under reduced condition. The purity is greater than 95%.

### ELISA Data

**Human LRIG1, His Tag ELISA**

0.2µg Human LRIG1, His Tag Per Well



Immobilized Human LRIG1, His Tag at 2µg/ml (100µl/well) on the plate. Dose response curve for Anti-LRIG1 Antibody, hFc Tag with the EC50 of 2.9ng/ml determined by ELISA.