

# Human LRP2 (3511-3963) Protein

Cat. No. LRP-HM624

## Description

<b>Source</b>	Recombinant Human LRP2 (3511-3963) Protein is expressed from HEK293 with His tag and Strep II tag at the C-terminus. It contains Met3511-Asn3963.
<b>Accession</b>	P98164
<b>Molecular Weight</b>	The protein has a predicted MW of 53.66 kDa. Due to glycosylation, the protein migrates to 60-80 kDa based on Bis-Tris PAGE result.
<b>Endotoxin</b>	Less than 0.1 EU per µg by the LAL method.
<b>Purity</b>	> 95% as determined by Bis-Tris PAGE > 95% as determined by HPLC

## Formulation and Storage

<b>Formulation</b>	Supplied as 0.22 µm filtered solution in 10mM HEPES, 150mM NaCl, 5mM CaCl <sub>2</sub> , 0.005% Tween-20 (pH 7.4).
<b>Storage</b>	Valid for 12 months from date of receipt when stored at -80°C. Recommend to aliquot the protein into smaller quantities for optimal storage. Please minimize freeze-thaw cycles.

## Background

Megalin (or LRP2) is an endocytic receptor that plays a central role in embryonic development and adult tissue homeostasis. Loss of this receptor in congenital or acquired diseases results in multiple organ dysfunctions, including forebrain malformation (holoprosencephaly) and renal reabsorption defects (renal Fanconi syndrome).

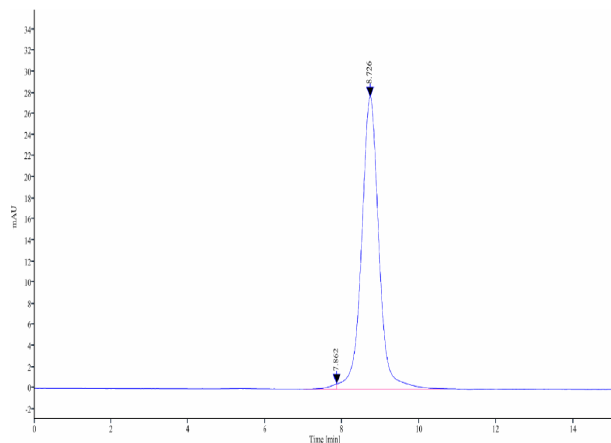
## Assay Data

### Bis-Tris PAGE



Human LRP2 (3511-3963) on Bis-Tris PAGE under reduced condition. The purity is greater than 95%.

### SEC-HPLC



The purity of Human LRP2 (3511-3963) is greater than 95% as determined by SEC-HPLC.