

# Cynomolgus/Rhesus macaque LRRC15/LIB Protein

Cat. No. LRR-CM115

## Description

<b>Source</b>	Recombinant Cynomolgus/Rhesus macaque LRRC15/LIB Protein is expressed from HEK293 with His tag at the C-Terminus. It contains Tyr22-Gly538.
<b>Accession</b>	A0A2K5UKB6(Cynomolgus) / F7FSB9(Rhesus macaque)
<b>Molecular Weight</b>	The protein has a predicted MW of 58.92 kDa. Due to glycosylation, the protein migrates to 70-80 kDa based on Bis-Tris PAGE result.
<b>Endotoxin</b>	Less than 1EU per $\mu\text{g}$ by the LAL method.
<b>Purity</b>	> 95% as determined by Bis-Tris PAGE > 95% as determined by HPLC

## Formulation and Storage

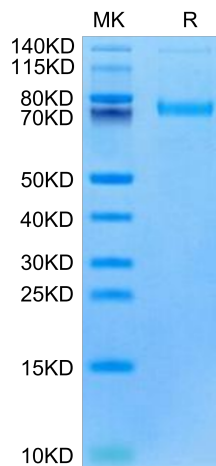
<b>Formulation</b>	Lyophilized from 0.22 $\mu\text{m}$ filtered solution in PBS (pH 7.4). Normally 8% trehalose is added as protectant before lyophilization.
<b>Reconstitution</b>	Centrifuge the tube before opening. Reconstituting to a concentration more than 100 $\mu\text{g}/\text{ml}$ is recommended. Dissolve the lyophilized protein in distilled water.
<b>Storage</b>	-20 to -80°C for 12 months as supplied from date of receipt. -80°C for 3 months after reconstitution. Recommend to aliquot the protein into smaller quantities for optimal storage. Please minimize freeze-thaw cycles.

## Background

The chimeric protein binds in vitro and in vivo to a specific element upstream of LRRC15, leading to dramatic transcriptional activation. LRRC15 encodes a leucine-rich transmembrane protein, present at the leading edge of migrating cells, the expression of which in normal tissues is restricted to the invasive cytotrophoblast layer of the placenta; small interfering (siRNA)-mediated suppression of LRRC15 expression in breast cancer cells leads to abrogation of invasiveness in vitro.

## Assay Data

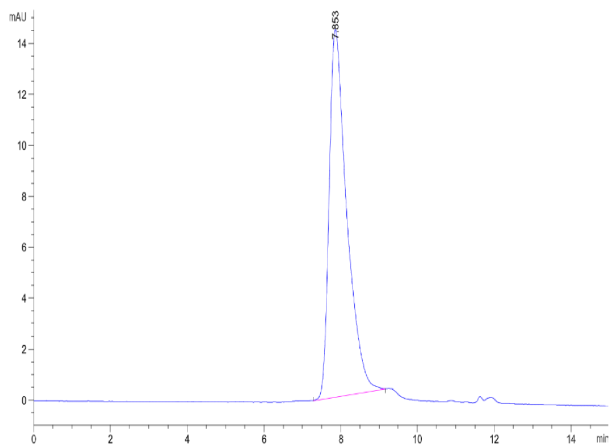
### Bis-Tris PAGE



Cynomolgus/Rhesus macaque LRRC15 on Bis-Tris PAGE under reduced condition. The purity is greater than 95%.

### SEC-HPLC

Assay Data



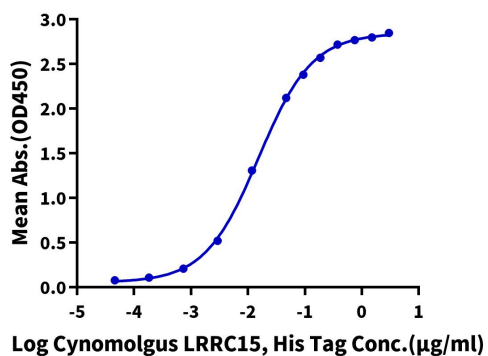
The purity of Cynomolgus/Rhesus macaque LRRC15 is greater than 95% as determined by SEC-HPLC.

Assay Data

ELISA Data

**Cynomolgus LRRC15, His Tag ELISA**

0.5µg Anti-LRRC15 Antibody, hFc Tag Per Well



Immobilized Anti-LRRC15 Antibody, hFc Tag at 5µg/ml (100µl/well) on the plate. Dose response curve for Cynomolgus LRRC15, His Tag with the EC50 of 15.3ng/ml determined by ELISA (QC Test).