

Biotinylated Cynomolgus/Rhesus macaque LRRC15/LIB Protein

Cat. No. LRR-CM415B

Description

Source	Recombinant Biotinylated Cynomolgus/Rhesus macaque LRRC15/LIB Protein is expressed from HEK293 with His tag and Avi tag at the C-terminus. It contains Tyr22-Gly538.
Accession	A0A2K5UKB6/F7FSB9
Molecular Weight	The protein has a predicted MW of 61.50 kDa. Due to glycosylation, the protein migrates to 70-90 kDa based on Tris-Bis PAGE result.
Endotoxin	Less than 1EU per µg by the LAL method.
Purity	> 95% as determined by Tris-Bis PAGE > 95% as determined by HPLC

Formulation and Storage

Formulation	Lyophilized from 0.22 µm filtered solution in PBS (pH 7.4). Normally 8% trehalose is added as protectant before lyophilization.
Reconstitution	Centrifuge the tube before opening. Reconstituting to a concentration more than 100 µg/ml is recommended. Dissolve the lyophilized protein in distilled water.
Storage	-20 to -80°C for 12 months as supplied from date of receipt. -80°C for 3 months after reconstitution. Recommend to aliquot the protein into smaller quantities for optimal storage. Please minimize freeze-thaw cycles.

Background

The chimeric protein binds in vitro and in vivo to a specific element upstream of LRRC15, leading to dramatic transcriptional activation. LRRC15 encodes a leucine-rich transmembrane protein, present at the leading edge of migrating cells, the expression of which in normal tissues is restricted to the invasive cytotrophoblast layer of the placenta; small interfering (siRNA)-mediated suppression of LRRC15 expression in breast cancer cells leads to abrogation of invasiveness in vitro.

Assay Data

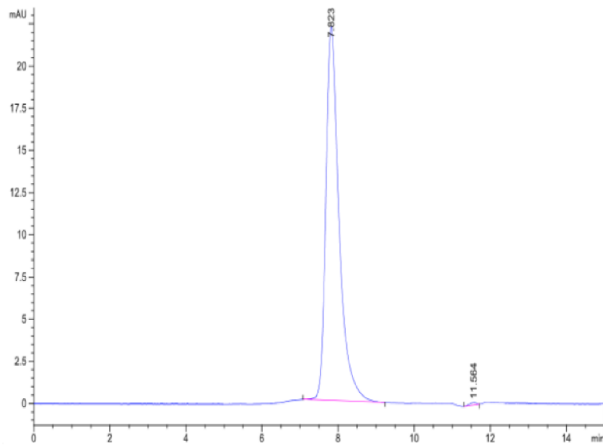
Tris-Bis PAGE



Biotinylated Cynomolgus/Rhesus macaque LRRC15 on Tris-Bis PAGE under reduced condition. The purity is greater than 95%.

SEC-HPLC

Assay Data



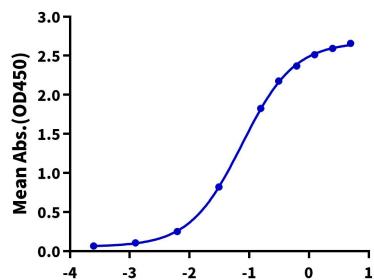
The purity of Biotinylated Cynomolgus/Rhesus macaque LRRC15 is greater than 95% as determined by SEC-HPLC.

Assay Data

ELISA Data

Biotinylated Cynomolgus/Rhesus macaque LRRC15, His Tag ELISA

0.5µg Anti-LRRC15 Antibody, hFc Tag Per Well



Immobilized Anti-LRRC15 Antibody, hFc Tag at 5µg/ml (100µl/well) on the plate. Dose response curve for Biotinylated Cynomolgus/Rhesus macaque LRRC15, His Tag with the EC50 of 75.9ng/ml determined by ELISA.

Log Biotinylated Cynomolgus/Rhesus macaque LRRC15, His Tag Conc.(µg/ml)