

Human LRRC15/LIB Protein

Cat. No. LRR-HM215

Description

Source	Recombinant Human LRRC15/LIB Protein is expressed from HEK293 with hFc tag at the C-terminus. It contains Tyr22-Gly538.
Accession	Q8TF66-1
Molecular Weight	The protein has a predicted MW of 84.54 kDa. Due to glycosylation, the protein migrates to 90-120 kDa based on Tris-Bis PAGE result.
Endotoxin	Less than 1EU per μg by the LAL method.
Purity	> 95% as determined by Tris-Bis PAGE > 95% as determined by HPLC

Formulation and Storage

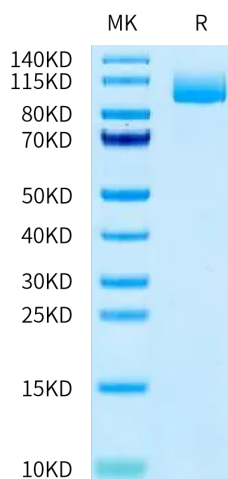
Formulation	Lyophilized from 0.22 μm filtered solution in PBS (pH 7.4). Normally 8% trehalose is added as protectant before lyophilization.
Reconstitution	Centrifuge the tube before opening. Reconstituting to a concentration more than 100 $\mu\text{g/ml}$ is recommended. Dissolve the lyophilized protein in distilled water.
Storage	-20 to -80°C for 12 months as supplied from date of receipt. -80°C for 3 months after reconstitution. Recommend to aliquot the protein into smaller quantities for optimal storage. Please minimize freeze-thaw cycles.

Background

The chimeric protein binds *in vitro* and *in vivo* to a specific element upstream of LRRC15, leading to dramatic transcriptional activation. LRRC15 encodes a leucine-rich transmembrane protein, present at the leading edge of migrating cells, the expression of which in normal tissues is restricted to the invasive cytotrophoblast layer of the placenta; small interfering (siRNA)-mediated suppression of LRRC15 expression in breast cancer cells leads to abrogation of invasiveness *in vitro*.

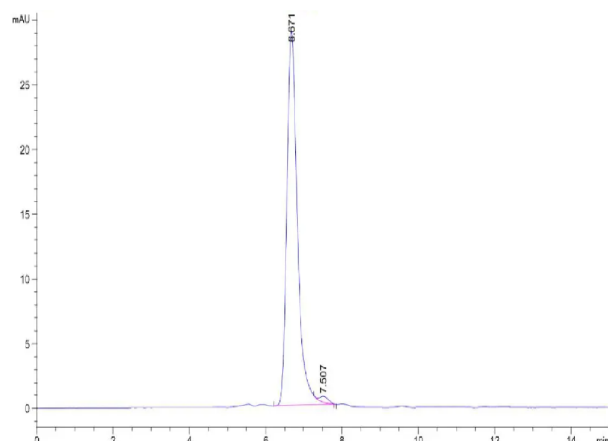
Assay Data

Tris-Bis PAGE



Human LRRC15 on Tris-Bis PAGE under reduced condition. The purity is greater than 95%.

SEC-HPLC

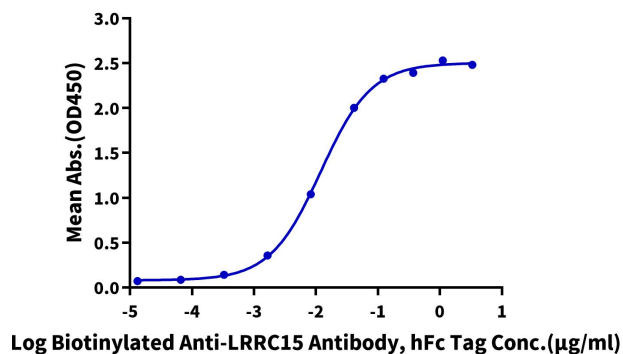


The purity of Human LRRC15 is greater than 95% as determined by SEC-HPLC.

Assay Data

ELISA Data

Human LRRC15, hFc Tag ELISA
0.2µg Human LRRC15, hFc Tag Per Well



Immobilized Human LRRC15, hFc Tag at 2µg/ml (100µl/well) on the plate. Dose response curve for Biotinylated Anti-LRRC15 Antibody, hFc Tag with the EC50 of 11.9ng/ml determined by ELISA.