

# Biotinylated Human LRRC15/LIB Protein

Cat. No. LRR-HM415B

## Description

<b>Source</b>	Recombinant Biotinylated Human LRRC15/LIB Protein is expressed from Expi293 with His tag and Avi tag at the C-terminal. It contains Tyr22-Gly538.
<b>Accession</b>	Q8TF66-1
<b>Molecular Weight</b>	The protein has a predicted MW of 60.7 kDa. Due to glycosylation, the protein migrates to 70-80 kDa based on Tris-Bis PAGE result.
<b>Endotoxin</b>	Less than 1EU per µg by the LAL method.
<b>Purity</b>	> 95% as determined by Tris-Bis PAGE > 95% as determined by HPLC

## Formulation and Storage

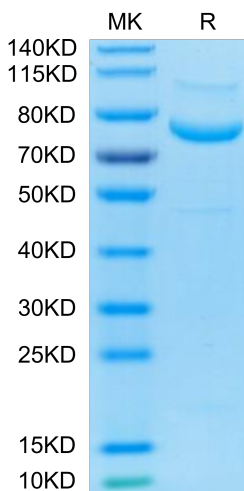
<b>Formulation</b>	Supplied as 0.22µm filtered solution in PBS (pH 7.4). Please dilute to the desired concentration according to the concentration of the solution shown on the product label.
<b>Storage</b>	Valid for 12 months from date of receipt when stored at -80°C. Recommend to aliquot the protein into smaller quantities for optimal storage. Please do not repeated freeze-thaw cycles.

## Background

The chimeric protein binds in vitro and in vivo to a specific element upstream of LRRC15, leading to dramatic transcriptional activation. LRRC15 encodes a leucine-rich transmembrane protein, present at the leading edge of migrating cells, the expression of which in normal tissues is restricted to the invasive cytotrophoblast layer of the placenta; small interfering (siRNA)-mediated suppression of LRRC15 expression in breast cancer cells leads to abrogation of invasiveness in vitro.

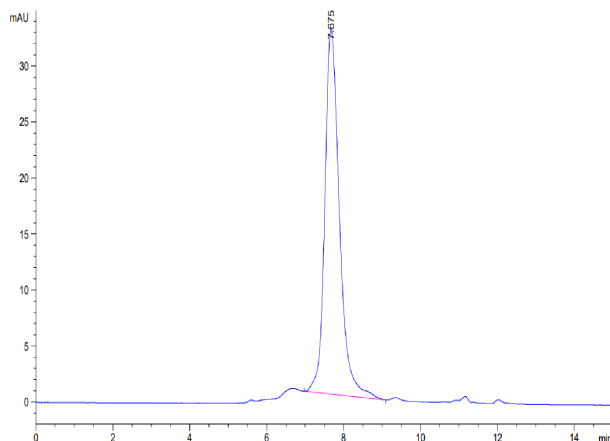
## Assay Data

### Tris-Bis PAGE



Biotinylated Human LRRC15 on Tris-Bis PAGE under reduced condition. The purity is greater than 95%.

### SEC-HPLC



The purity of Biotinylated Human LRRC15 is greater than 95% as determined by SEC-HPLC.

# Biotinylated Human LRRC15/LIB Protein

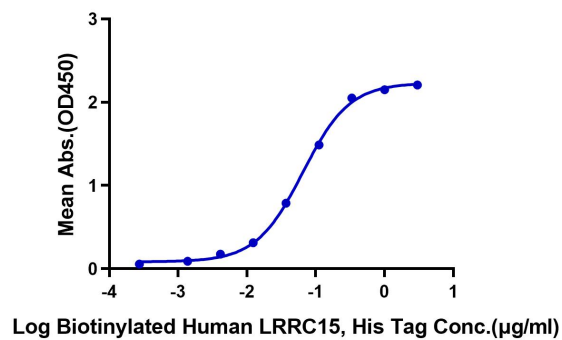
Cat. No. LRR-HM415B

## Assay Data

### ELISA Data

#### Biotinylated Human LRRC15, His Tag ELISA

0.1  $\mu$ g Anti-LRRC15 Antibody, hFc Tag Per Well



Immobilized Anti-LRRC15 Antibody, hFc Tag at 1  $\mu$ g/ml (100  $\mu$ l/Well) on the plate. Dose response curve for Biotinylated Human LRRC15, His Tag with the EC50 of 64.9ng/ml determined by ELISA.