

Mouse LRRC15/LIB Protein, Ultra Low Endotoxin



Cat. No. LRR-MM115-UL

Description

Source	Recombinant Mouse LRRC15/LIB Protein is expressed from HEK293 with His tag at the C-Terminus. It contains Tyr22-Gly536.
Accession	Q80X72
Molecular Weight	The protein has a predicted MW of 58.56 kDa. Due to glycosylation, the protein migrates to 70-80 kDa based on Bis-Tris PAGE result.
Endotoxin	Less than 0.01 EU per µg by the LAL method.
Purity	> 95% as determined by Bis-Tris PAGE > 95% as determined by HPLC

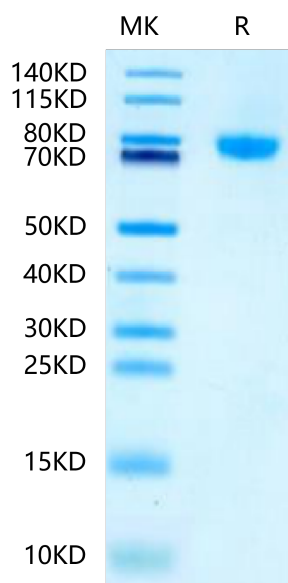
Formulation and Storage

Formulation	Lyophilized from 0.22 µm filtered solution in PBS (pH 7.4). Normally 8% trehalose is added as protectant before lyophilization.
Reconstitution	Dissolve the lyophilized protein in distilled water. Please refer to the Certificate of Analysis for detailed instructions.
Storage	-20 to -80°C for 12 months as supplied from date of receipt. -80°C for 3 months after reconstitution. Recommend to aliquot the protein into smaller quantities for optimal storage. Please minimize freeze-thaw cycles.

Background

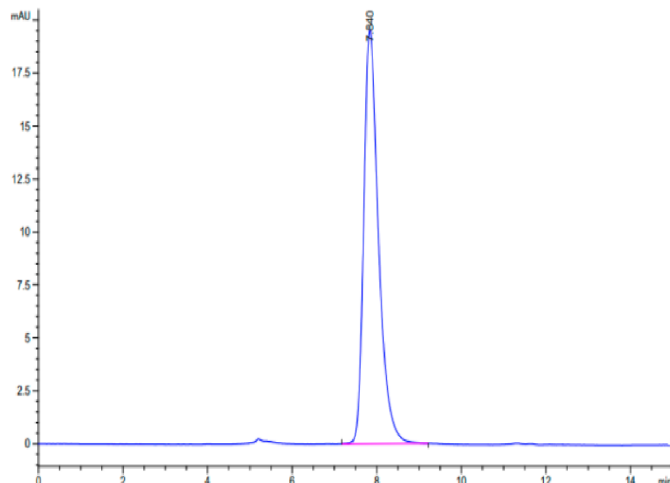
The leucine-rich repeat-containing protein 15 (LRRC15) is involved in cell–cell and cell–matrix interactions and came into focus as a promising anticancer target owing to its overexpression in mesenchymal-derived tumors such as sarcoma, glioblastoma, and melanoma and in cancer-associated fibroblasts in the microenvironment of breast, head and neck, lung, and pancreatic tumors.

Assay Data



Mouse LRRC15 on Bis-Tris PAGE under reduced condition. The purity is greater than 95%.

Assay Data

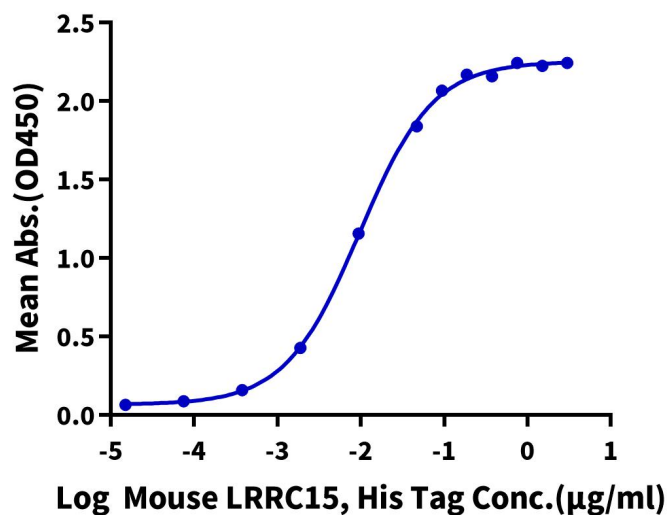


The purity of Mouse LRRC15 is greater than 95% as determined by SEC-HPLC.

ELISA Data

Mouse LRRC15, His Tag ELISA

0.2µg Anti-LRRC15 Antibody, hFc Tag Per Well



Immobilized Anti-LRRC15 Antibody, hFc Tag at 2µg/ml (100 µl/well) on the plate. Dose response curve for Mouse LRRC15, His Tag with the EC50 of 9.6ng/ml determined by ELISA (QC Test).