

Mouse LRRC15/LIB Protein

Cat. No. LRR-MM115

Description

Source	Recombinant Mouse LRRC15/LIB Protein is expressed from Expi293 with His tag at the C-terminal. It contains Tyr22-Gly536.
Accession	Q80X72
Molecular Weight	The protein has a predicted MW of 58.56 kDa. Due to glycosylation, the protein migrates to 70-80 kDa based on Tris-Bis PAGE result.
Endotoxin	Less than 1EU per μg by the LAL method.
Purity	> 95% as determined by Tris-Bis PAGE > 95% as determined by HPLC

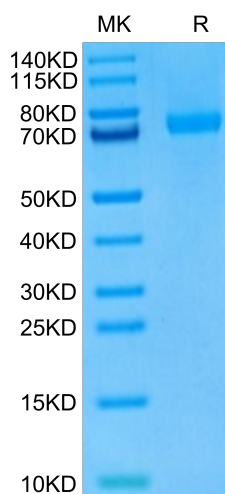
Formulation and Storage

Formulation	Supplied as 0.22 μm filtered solution in PBS (pH 7.4). Please dilute to the desired concentration according to the concentration of the solution shown on the product label.
Storage	Valid for 12 months from date of receipt when stored at -80°C . Recommend to aliquot the protein into smaller quantities for optimal storage. Please do not repeated freeze-thaw cycles.

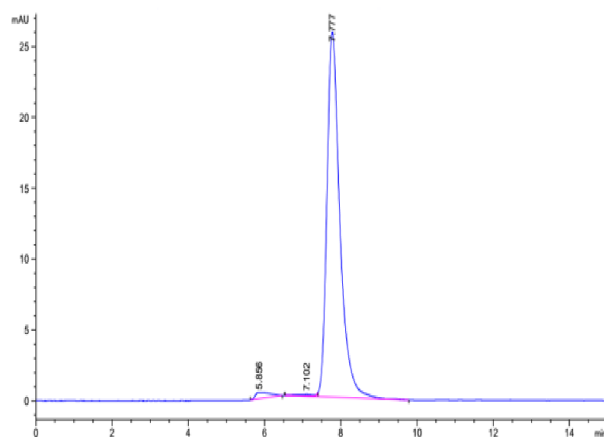
Background

The chimeric protein binds in vitro and in vivo to a specific element upstream of LRRC15, leading to dramatic transcriptional activation. LRRC15 encodes a leucine-rich transmembrane protein, present at the leading edge of migrating cells, the expression of which in normal tissues is restricted to the invasive cytotrophoblast layer of the placenta; small interfering (siRNA)-mediated suppression of LRRC15 expression in breast cancer cells leads to abrogation of invasiveness in vitro.

Assay Data



Mouse LRRC15 on Tris-Bis PAGE under reduced condition. The purity is greater than 95%.



The purity of Mouse LRRC15 is greater than 95% as determined by SEC-HPLC.