

# Human LTBR Protein

Cat. No. LTB-HM201



## Description

<b>Source</b>	Recombinant Human LTBR Protein is expressed from Expi293 with hFc tag at the C-terminal. It contains Gln31-Met227.
<b>Accession</b>	P36941-1
<b>Molecular Weight</b>	The protein has a predicted MW of 48.5 kDa. Due to glycosylation, the protein migrates to 60-70 kDa based on Tris-Bis PAGE result.
<b>Endotoxin</b>	Less than 1EU per µg by the LAL method.
<b>Purity</b>	> 95% as determined by Tris-Bis PAGE > 95% as determined by HPLC

## Formulation and Storage

<b>Formulation</b>	Supplied as 0.22µm filtered solution in PBS (pH 7.4). Please dilute to the desired concentration according to the concentration of the solution shown on the product label.
<b>Storage</b>	Valid for 12 months from date of receipt when stored at -80°C. Recommend to aliquot the protein into smaller quantities for optimal storage. Please do not repeated freeze-thaw cycles.

## Background

Components of lymphotoxin beta receptor (LTBR)-associated signaling complexes, including TRAF2, TRAF3, NIK, IKK1, and IKK2 have been shown to participate in the coupling of LTBR to NFkappaB. TRAF3 functions as a negative regulator of LTBR signaling via both canonical and non-canonical NFkappaB pathways by two distinct mechanisms. These effects of TRAF3 depletion did not require LTBR signaling and were consistent with autonomous activation of the non-canonical NFkappaB pathway.

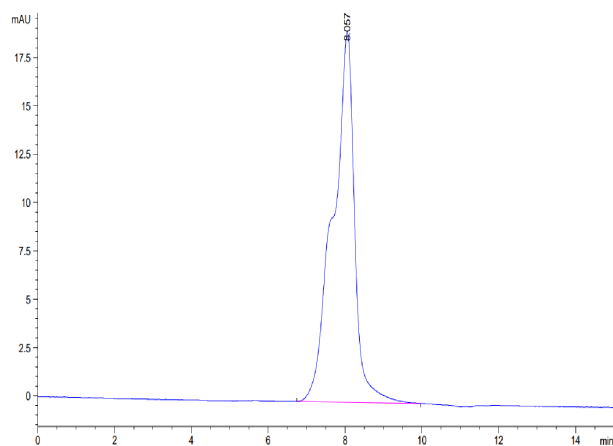
## Assay Data

### Tris-Bis PAGE



Human LTBR on Tris-Bis PAGE under reduced condition. The purity is greater than 95%.

### SEC-HPLC



The purity of Human LTBR is greater than 95% as determined by SEC-HPLC.

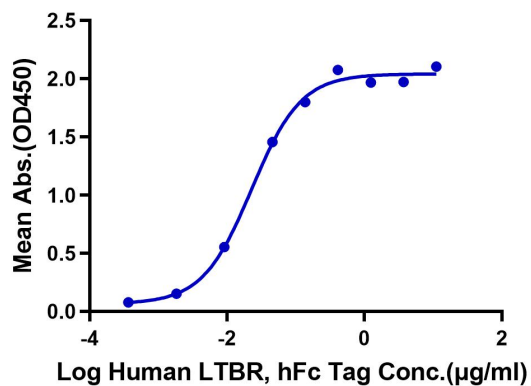
### ELISA Data

For Research Use Only

Assay Data

Human LTBR, hFc Tag ELISA

0.05µg Human LIGHT, His Tag Per Well

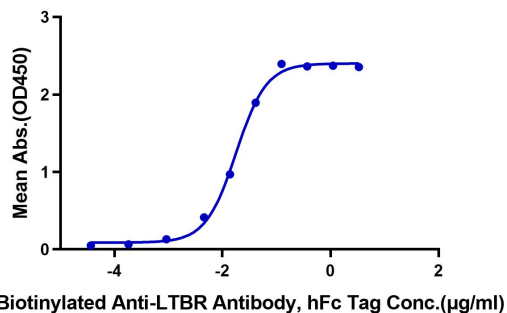


Immobilized Human LIGHT, His Tag at 0.5µg/ml (100µl/Well) on the plate. Dose response curve for Human LTBR, hFc Tag with the EC50 22.9ng/ml determined by ELISA.

ELISA Data

Human LTBR, hFc Tag ELISA

0.05µg Human LTBR, hFc Tag Per Well



Immobilized Human LTBR, hFc Tag at 0.5µg/ml (100µl/Well) on the plate. Dose response curve for Biotinylated Anti-LTBR Antibody, hFc Tag with the EC50 17.8ng/ml determined by ELISA.