

Cynomolgus LY75/CD205 Protein

Cat. No. LY7-CM105

Description

| | |
|-------------------------|--|
| Source | Recombinant Cynomolgus LY75/CD205 Protein is expressed from HEK293 with His tag at the C-Terminus. It contains Ser28-Asp1666. |
| Accession | XP_005573337.2 |
| Molecular Weight | The protein has a predicted MW of 190.17 kDa. Due to glycosylation, the protein migrates to 230-245 kDa based on Tris-Bis PAGE result. |
| Endotoxin | Less than 1EU per µg by the LAL method. |
| Purity | > 95% as determined by Tris-Bis PAGE > 90% as determined by HPLC |

Formulation and Storage

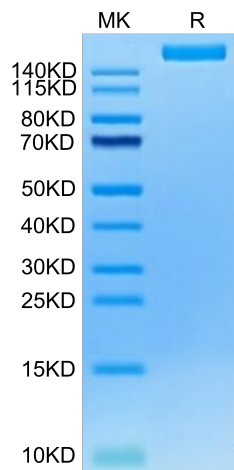
| | |
|-----------------------|---|
| Formulation | Lyophilized from 0.22µm filtered solution in PBS (pH 7.4). Normally 8% trehalose is added as protectant before lyophilization. |
| Reconstitution | Centrifuge the tube before opening. Reconstituting to a concentration more than 100 µg/ml is recommended. Dissolve the lyophilized protein in distilled water. |
| Storage | -20 to -80°C for 12 months as supplied from date of receipt. -20 to -80°C for 3-6 months in unopened state after reconstitution. 2-8°C for 2-7 days after reconstitution. Recommend to aliquot the protein into smaller quantities for optimal storage. Please minimize freeze-thaw cycles. |

Background

Lymphocyte antigen 75 (Ly75/CD205) is a surface marker on mitotic germ cells in rainbow trout. In mammals, several cell surface molecular markers have been characterized in order to identify the mitotic germ cells. The expression profile of Ly75 protein was similar to that of the mRNA. Furthermore, identification of various fish homologs of Ly75 confirmed that their amino acid sequences are well conserved. Therefore, Ly75 may be appropriate for use as a versatile cell surface marker for mitotic germ cells in fish.

Assay Data

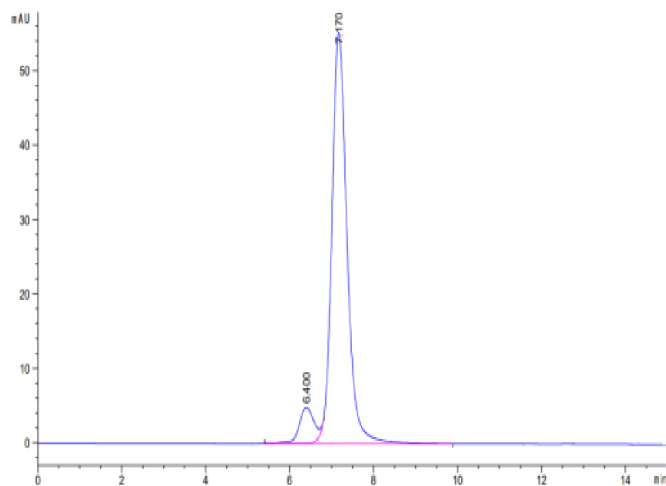
Tris-Bis PAGE



Cynomolgus LY75 on Tris-Bis PAGE under reduced condition. The purity is greater than 95%.

SEC-HPLC

Assay Data



The purity of Cynomolgus LY75 is greater than 90% as determined by SEC-HPLC.