

Human LY75/CD205 Protein

Cat. No. LY7-HM105

Description

Source	Recombinant Human LY75/CD205 Protein is expressed from HEK293 with His tag at the C-Terminus. It contains Ser28-Asp1666.
Accession	O60449-1
Molecular Weight	The protein has a predicted MW of 190.2 kDa. Due to glycosylation, the protein migrates to 230-245 kDa based on Bis-Tris PAGE result.
Endotoxin	Less than 1EU per ug by the LAL method.
Purity	> 95% as determined by Bis-Tris PAGE > 95% as determined by HPLC

Formulation and Storage

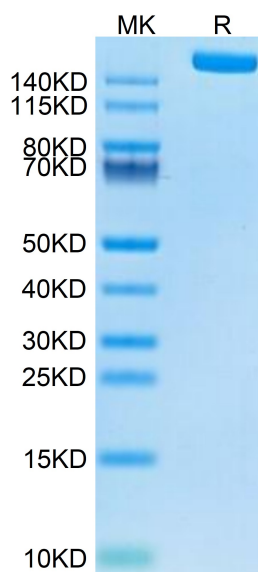
Formulation	Supplied as 0.22µm filtered solution in PBS (pH 7.4).
Storage	Valid for 12 months from date of receipt when stored at -80°C. Recommend to aliquot the protein into smaller quantities for optimal storage. Please minimize freeze-thaw cycles.

Background

Lymphocyte antigen 75 (Ly75/CD205) is a surface marker on mitotic germ cells in rainbow trout. In mammals, several cell surface molecular markers have been characterized in order to identify the mitotic germ cells. The expression profile of Ly75 protein was similar to that of the mRNA. Furthermore, identification of various fish homologs of ly75 confirmed that their amino acid sequences are well conserved. Therefore, Ly75 may be appropriate for use as a versatile cell surface marker for mitotic germ cells in fish.

Assay Data

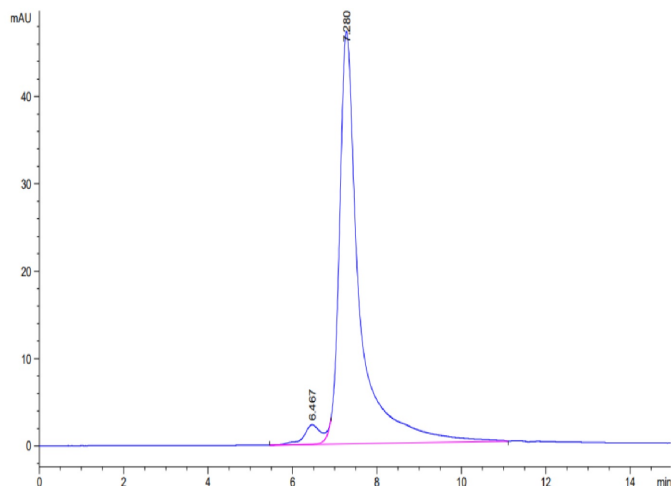
Bis-Tris PAGE



Human LY75 on Bis-Tris PAGE under reduced condition. The purity is greater than 95%.

SEC-HPLC

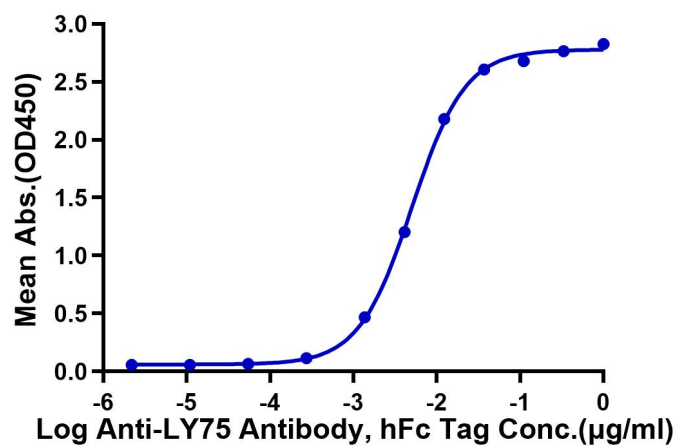
Assay Data



The purity of Human LY75 is greater than 95% as determined by SEC-HPLC.

ELISA Data

Human LY75, His Tag ELISA
0.01µg Human LY75, His Tag Per Well



Immobilized Human LY75, His Tag at 0.1µg/ml (100µl/well) on the plate. Dose response curve for Anti-LY75 Antibody, hFc Tag with the EC50 of 5.1ng/ml determined by ELISA.