

# Human LY75/CD205 Protein

Cat. No. LY7-HM105



## Description

<b>Source</b>	Recombinant Human LY75/CD205 Protein is expressed from HEK293 with His tag at the C-Terminus. It contains Ser28-Asp1666.
<b>Accession</b>	O60449-1
<b>Molecular Weight</b>	The protein has a predicted MW of 190.2 kDa. Due to glycosylation, the protein migrates to 230-245 kDa based on Bis-Tris PAGE result.
<b>Endotoxin</b>	Less than 1EU per ug by the LAL method.
<b>Purity</b>	> 95% as determined by Bis-Tris PAGE > 95% as determined by HPLC

## Formulation and Storage

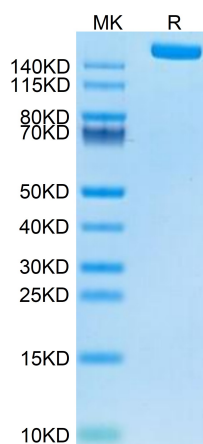
<b>Formulation</b>	Lyophilized from 0.22µm filtered solution in PBS (pH 7.4). Normally 8% trehalose is added as protectant before lyophilization.
<b>Reconstitution</b>	Centrifuge the tube before opening. Reconstituting to a concentration more than 100 µg/ml is recommended. Dissolve the lyophilized protein in distilled water.
<b>Storage</b>	-20 to -80°C for 12 months as supplied from date of receipt. -80°C for 3 months after reconstitution. Recommend to aliquot the protein into smaller quantities for optimal storage. Please minimize freeze-thaw cycles.

## Background

Lymphocyte antigen 75 (Ly75/CD205) is a surface marker on mitotic germ cells in rainbow trout. In mammals, several cell surface molecular markers have been characterized in order to identify the mitotic germ cells. The expression profile of Ly75 protein was similar to that of the mRNA. Furthermore, identification of various fish homologs of Ly75 confirmed that their amino acid sequences are well conserved. Therefore, Ly75 may be appropriate for use as a versatile cell surface marker for mitotic germ cells in fish.

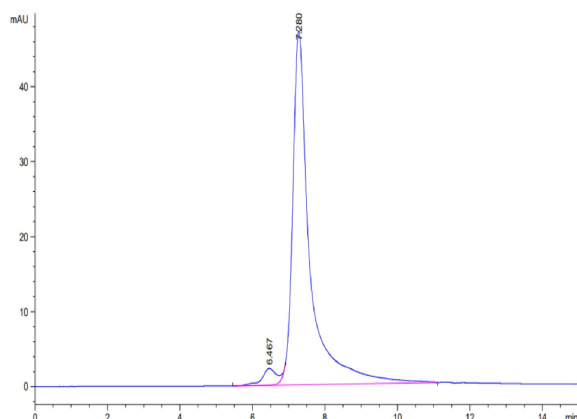
## Assay Data

### Bis-Tris PAGE



Human LY75 on Bis-Tris PAGE under reduced condition. The purity is greater than 95%.

### SEC-HPLC

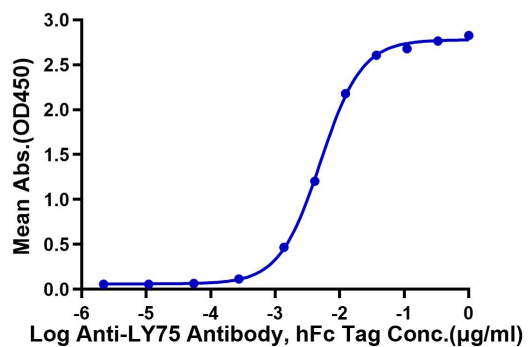


The purity of Human LY75 is greater than 95% as determined by SEC-HPLC.

Assay Data

ELISA Data

**Human LY75, His Tag ELISA**  
0.01 $\mu$ g Human LY75, His Tag Per Well



Immobilized Human LY75, His Tag at 0.1 $\mu$ g/ml (100 $\mu$ l/well) on the plate. Dose response curve for Anti-LY75 Antibody, hFc Tag with the EC50 of 5.1ng/ml determined by ELISA.