

Human CD229/SLAMF3 Protein

Cat. No. LY9-HM31D

Description

Source	Recombinant Human CD229/SLAMF3 Protein is expressed from HEK293 with mFc (IgG1) tag at the C-terminus. It contains Gly251-Asn452.
Accession	Q9HBG7-1
Molecular Weight	The protein has a predicted MW of 48.04 kDa. Due to glycosylation, the protein migrates to 55-70 kDa based on Bis-Tris PAGE result.
Endotoxin	Less than 1EU per μ g by the LAL method.
Purity	> 95% as determined by Bis-Tris PAGE > 95% as determined by HPLC

Formulation and Storage

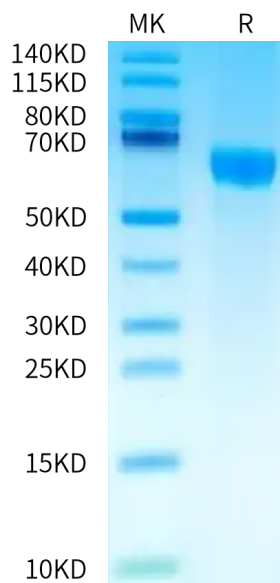
Formulation	Supplied as 0.22 μ m filtered solution in PBS (pH 7.4).
Storage	Valid for 12 months from date of receipt when stored at -80°C. Recommend to aliquot the protein into smaller quantities for optimal storage. Please minimize freeze-thaw cycles.

Background

CD229 was strongly and homogeneously overexpressed on the PC of patients with monoclonal gammopathy of undetermined significance (MGUS), smoldering myeloma, MM, and PC leukemia. CD229 was particularly overexpressed on those PC showing an abnormal phenotype such as expression of CD56. Most importantly, CD229 was also highly expressed on those cells in the patients' BM displaying the phenotype of chemotherapy-resistant and myeloma-propagating cells.

Assay Data

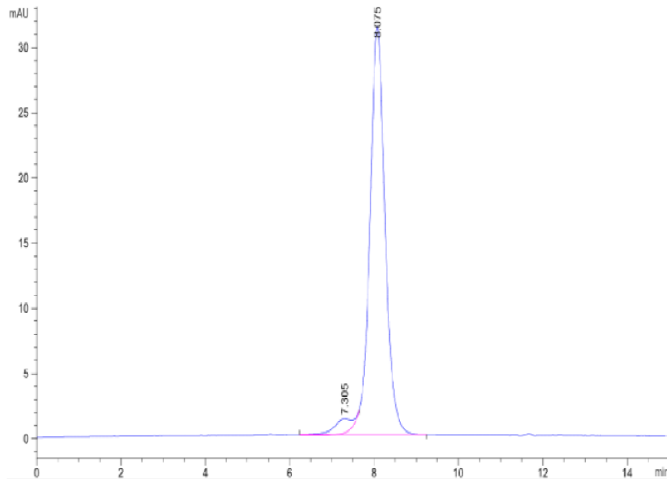
Bis-Tris PAGE



Human CD229 on Bis-Tris PAGE under reduced condition. The purity is greater than 95%.

SEC-HPLC

Assay Data



The purity of Human CD229 is greater than 95% as determined by SEC-HPLC.