

# Human CD229/SLAMF3 Protein

Cat. No. LY9-HM32D

## Description

<b>Source</b>	Recombinant Human CD229/SLAMF3 Protein is expressed from HEK293 with mFc (IgG1) tag at the C-terminus. It contains Lys364-Asp452.
<b>Accession</b>	Q9HBG7-1
<b>Molecular Weight</b>	The protein has a predicted MW of 35.56 kDa. Due to glycosylation, the protein migrates to 40-50 kDa based on Bis-Tris PAGE result.
<b>Endotoxin</b>	Less than 1EU per $\mu$ g by the LAL method.
<b>Purity</b>	> 95% as determined by Bis-Tris PAGE > 90% as determined by HPLC

## Formulation and Storage

<b>Formulation</b>	Supplied as 0.22 $\mu$ m filtered solution in PBS (pH 7.4).
<b>Storage</b>	Valid for 12 months from date of receipt when stored at -80°C. Recommend to aliquot the protein into smaller quantities for optimal storage. Please minimize freeze-thaw cycles.

## Background

CD229 was strongly and homogeneously overexpressed on the PC of patients with monoclonal gammopathy of undetermined significance (MGUS), smoldering myeloma, MM, and PC leukemia. CD229 was particularly overexpressed on those PC showing an abnormal phenotype such as expression of CD56. Most importantly, CD229 was also highly expressed on those cells in the patients' BM displaying the phenotype of chemotherapy-resistant and myeloma-propagating cells.

## Assay Data

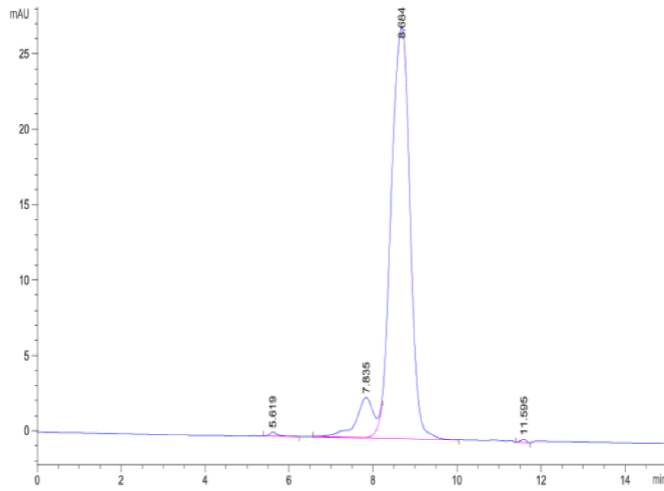
### Bis-Tris PAGE



Human CD229 on Bis-Tris PAGE under reduced condition. The purity is greater than 95%.

### SEC-HPLC

Assay Data



The purity of Human CD229 is greater than 90% as determined by SEC-HPLC.