

Mouse LY6A Protein

Cat. No. LYA-ME006

Description

Source	Recombinant Mouse LY6A Protein is expressed from E.coli with His tag at the N-terminal. It contains Leu27-Gly119.
Accession	NP_001258345.1
Molecular Weight	The protein has a predicted MW of 10.80 kDa. The protein migrates to 15-20 kDa based on Tris-Bis PAGE result.
Endotoxin	Less than 1EU per µg by the LAL method.
Purity	> 95% as determined by Tris-Bis PAGE > 95% as determined by HPLC

Formulation and Storage

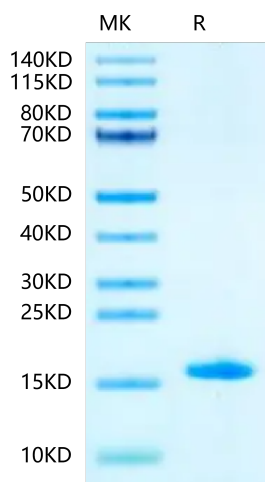
Formulation	Lyophilized from 0.22µm filtered solution in PBS (pH 7.4). Normally 8% trehalose is added as protectant before lyophilization.
Reconstitution	Centrifuge the tube before opening. Reconstituting to a concentration more than 100 µg/ml is recommended. Dissolve the lyophilized protein in distilled water.
Storage	-20 to -80°C for 12 months as supplied from date of receipt. -20 to -80°C for 3-6 months in unopened state after reconstitution. 2-8°C for 2-7 days after reconstitution. Recommend to aliquot the protein into smaller quantities for optimal storage. Please minimize freeze-thaw cycles.

Background

Stem Cell Antigen-1 (Sca-1/Ly6A) was the first identified member of the Lymphocyte antigen-6 (Ly6) gene family. Sca-1 is a cell surface glycoprotein that is often used as a biomarker for stem cells and cell stemness.

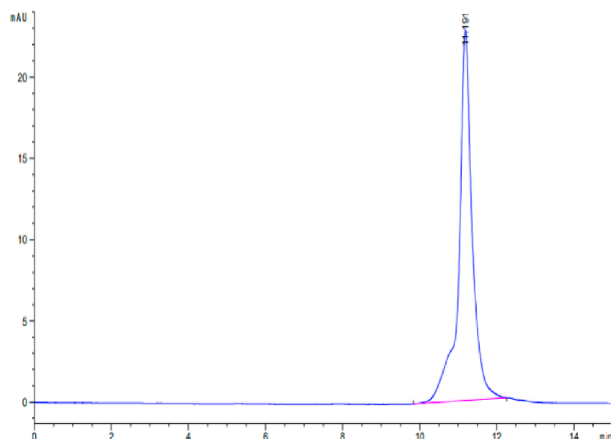
Assay Data

Tris-Bis PAGE



Mouse LY6A on Tris-Bis PAGE under reduced condition. The purity is greater than 95%.

SEC-HPLC



The purity of Mouse LY6A is greater than 95% as determined by SEC-HPLC.