

Cynomolgus LY6G6D Protein

Cat. No. LYD-CM16D



Description

Source	Recombinant Cynomolgus LY6G6D Protein is expressed from HEK293 with His tag at the N-terminus. It contains Asn20-Ser104.
Accession	XP_045246087.1
Molecular Weight	The protein has a predicted MW of 10.22 kDa. Due to glycosylation, the protein migrates to 14-24 kDa based on Tris-Bis PAGE result.
Endotoxin	Less than 1EU per µg by the LAL method.
Purity	> 95% as determined by Tris-Bis PAGE

Formulation and Storage

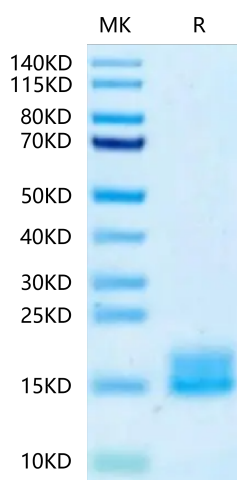
Formulation	Lyophilized from 0.22 µm filtered solution in PBS (pH 7.4). Normally 8% trehalose is added as protectant before lyophilization.
Reconstitution	Centrifuge the tube before opening. Reconstituting to a concentration more than 100 µg/ml is recommended. Dissolve the lyophilized protein in distilled water.
Storage	-20 to -80°C for 12 months as supplied from date of receipt. -80°C for 3-6 months after reconstitution. 2-8°C for 2-7 days after reconstitution. Recommend to aliquot the protein into smaller quantities for optimal storage. Please minimize freeze-thaw cycles.

Background

LY6G6D is a selectively expressed colorectal cancer antigen that can be used for targeting a therapeutic T-cell response by a T-cell engager. LY6G6D was identified as a selectively expressed CRC antigen that can be utilized to potently re-direct and activate cytotoxic T-cells to lyse LY6G6D expressing CRC using a TcE. This effect can be spread to target negative neighboring tumor cells, potentially leading to improved therapeutic efficacy.

Assay Data

Tris-Bis PAGE

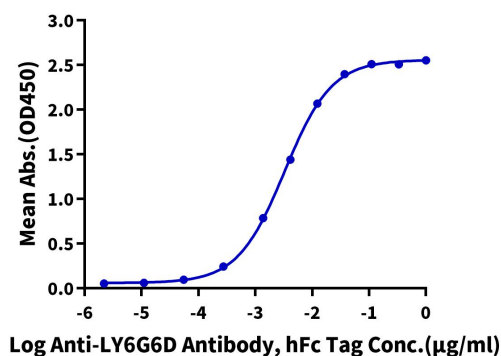


Cynomolgus LY6G6D on Tris-Bis PAGE under reduced condition. The purity is greater than 95%.

ELISA Data

Cynomolgus LY6G6D, His Tag ELISA

0.1µg Cynomolgus LY6G6D, His Tag Per Well



Immobilized Cynomolgus LY6G6D, His Tag at 1µg/ml (100µl/well) on the plate. Dose response curve for Anti-LY6G6D Antibody, hFc Tag with the EC50 of 3.3ng/ml determined by ELISA.