

Cynomolgus LY6G6D Protein

Cat. No. LYD-CM26D



Description

Source	Recombinant Cynomolgus LY6G6D Protein is expressed from HEK293 with hFc tag at the N-terminus. It contains Asn20-Ser104.
Accession	XP_045246087.1
Molecular Weight	The protein has a predicted MW of 34.65 kDa. Due to glycosylation, the protein migrates to 40-50 kDa based on Tris-Bis PAGE result.
Endotoxin	Less than 1EU per µg by the LAL method.
Purity	> 95% as determined by Tris-Bis PAGE > 95% as determined by HPLC

Formulation and Storage

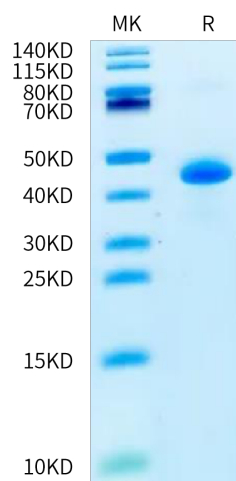
Formulation	Supplied as 0.22 µm filtered solution in PBS (pH 7.4).
Storage	Valid for 12 months from date of receipt when stored at -80°C. Recommend to aliquot the protein into smaller quantities for optimal storage. Please minimize freeze-thaw cycles.

Background

LY6G6D is a selectively expressed colorectal cancer antigen that can be used for targeting a therapeutic T-cell response by a T-cell engager. LY6G6D was identified as a selectively expressed CRC antigen that can be utilized to potently re-direct and activate cytotoxic T-cells to lyse LY6G6D expressing CRC using a TcE. This effect can be spread to target negative neighboring tumor cells, potentially leading to improved therapeutic efficacy.

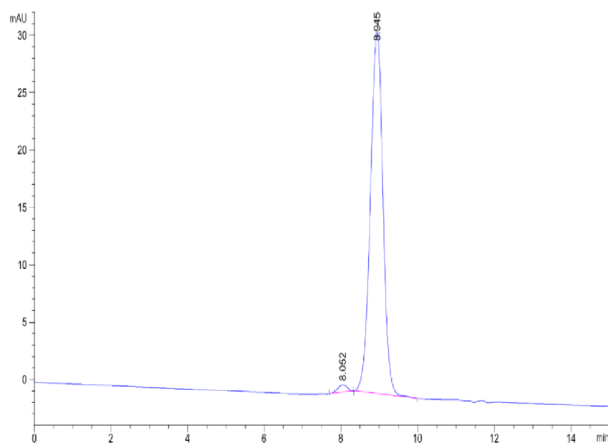
Assay Data

Tris-Bis PAGE



Cynomolgus LY6G6D on Tris-Bis PAGE under reduced condition. The purity is greater than 95%.

SEC-HPLC



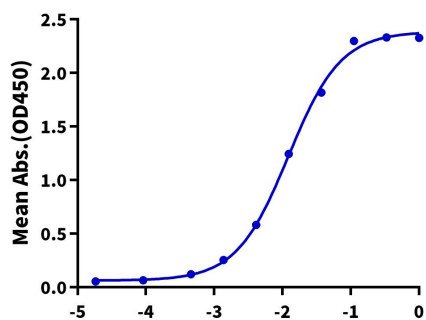
The purity of Cynomolgus LY6G6D is greater than 95% as determined by SEC-HPLC.

Assay Data

ELISA Data

Cynomolgus LY6G6D, hFc Tag ELISA

0.05µg Cynomolgus LY6G6D, hFc Tag Per Well



Immobilized Cynomolgus LY6G6D, hFc Tag at 0.5µg/ml (100µl/well) on the plate. Dose response curve for Biotinylated Anti-LY6G6D Antibody, hFc Tag with the EC50 of 12.2ng/ml determined by ELISA.

Log Biotinylated Anti-LY6G6D Antibody, hFc Tag Conc.(µg/ml)