

# Cynomolgus LY6G6D Protein

Cat. No. LYD-CM26D



## Description

<b>Source</b>	Recombinant Cynomolgus LY6G6D Protein is expressed from HEK293 with hFc (IgG1) tag at the N-terminus. It contains Asn20-Ser104.
<b>Accession</b>	XP_014991478.1
<b>Molecular Weight</b>	The protein has a predicted MW of 34.65 kDa. Due to glycosylation, the protein migrates to 40-50 kDa based on Bis-Tris PAGE result.
<b>Endotoxin</b>	Less than 1 EU per µg by the LAL method.
<b>Purity</b>	> 95% as determined by Bis-Tris PAGE > 90% as determined by HPLC

## Formulation and Storage

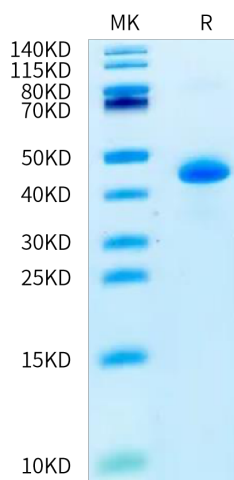
<b>Formulation</b>	Lyophilized from 0.22 µm filtered solution in PBS (pH 7.4). Normally 8% trehalose is added as protectant before lyophilization.
<b>Reconstitution</b>	Dissolve the lyophilized protein in distilled water. Please refer to the Certificate of Analysis for detailed instructions.
<b>Storage</b>	-20 to -80°C for 12 months as supplied from date of receipt. -80°C for 3 months after reconstitution. Recommend to aliquot the protein into smaller quantities for optimal storage. Please minimize freeze-thaw cycles.

## Background

LY6G6D is a selectively expressed colorectal cancer antigen that can be used for targeting a therapeutic T-cell response by a T-cell engager. LY6G6D was identified as a selectively expressed CRC antigen that can be utilized to potently re-direct and activate cytotoxic T-cells to lyse LY6G6D expressing CRC using a TcE. This effect can be spread to target negative neighboring tumor cells, potentially leading to improved therapeutic efficacy.

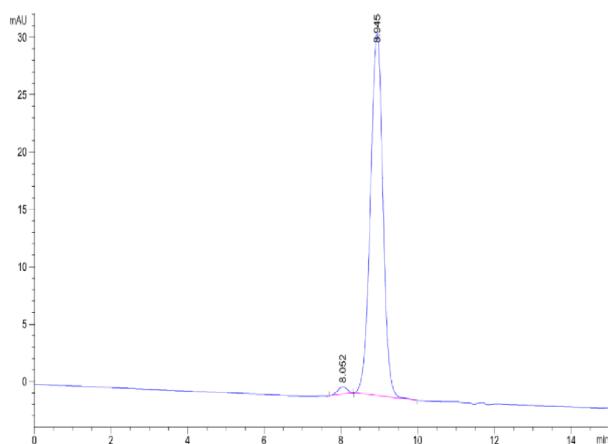
## Assay Data

### Bis-Tris PAGE



Cynomolgus LY6G6D on Bis-Tris PAGE under reduced condition. The purity is greater than 95%.

### SEC-HPLC



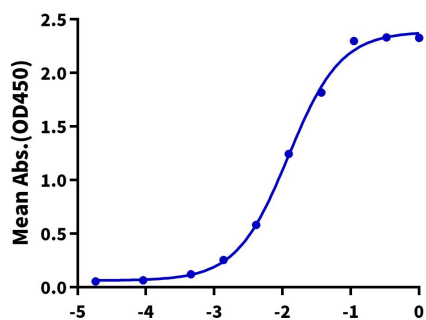
The purity of Cynomolgus LY6G6D is greater than 90% as determined by SEC-HPLC.

Assay Data

ELISA Data

**Cynomolgus LY6G6D, hFc Tag ELISA**

0.05µg Cynomolgus LY6G6D, hFc Tag Per Well



Immobilized Cynomolgus LY6G6D, hFc Tag at 0.5µg/ml (100µl/well) on the plate. Dose response curve for Biotinylated Anti-LY6G6D Antibody, hFc Tag with the EC50 of 12.2ng/ml determined by ELISA (QC Test).

Log Biotinylated Anti-LY6G6D Antibody, hFc Tag Conc.(µg/ml)