

# Human LY6G6D Protein

Cat. No. LYD-HM26D



## Description

<b>Source</b>	Recombinant Human LY6G6D Protein is expressed from HEK293 with hFc tag at the C-Terminus. It contains Asn20-Ser104.
<b>Accession</b>	O95868
<b>Molecular Weight</b>	The protein has a predicted MW of 35.87 kDa. Due to glycosylation, the protein migrates to 40-50 kDa based on Tris-Bis PAGE result.
<b>Endotoxin</b>	Less than 1EU per µg by the LAL method.
<b>Purity</b>	> 95% as determined by Tris-Bis PAGE > 95% as determined by HPLC

## Formulation and Storage

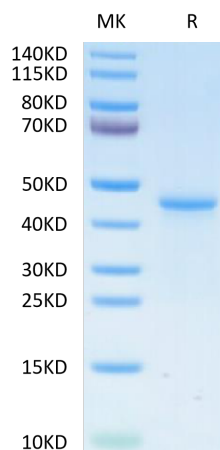
<b>Formulation</b>	Lyophilized from 0.22µm filtered solution in PBS (pH 7.4). Normally 8% trehalose is added as protectant before lyophilization.
<b>Reconstitution</b>	Centrifuge the tube before opening. Reconstituting to a concentration more than 100 µg/ml is recommended. Dissolve the lyophilized protein in distilled water.
<b>Storage</b>	-20 to -80°C for 12 months as supplied from date of receipt. -20 to -80°C for 3-6 months in unopened state after reconstitution. 2-8°C for 2-7 days after reconstitution. Recommend to aliquot the protein into smaller quantities for optimal storage. Please minimize freeze-thaw cycles.

## Background

LY6G6D is a selectively expressed colorectal cancer antigen that can be used for targeting a therapeutic T-cell response by a T-cell engager. LY6G6D was identified as a selectively expressed CRC antigen that can be utilized to potently re-direct and activate cytotoxic T-cells to lyse LY6G6D expressing CRC using a TcE. This effect can be spread to target negative neighboring tumor cells, potentially leading to improved therapeutic efficacy.

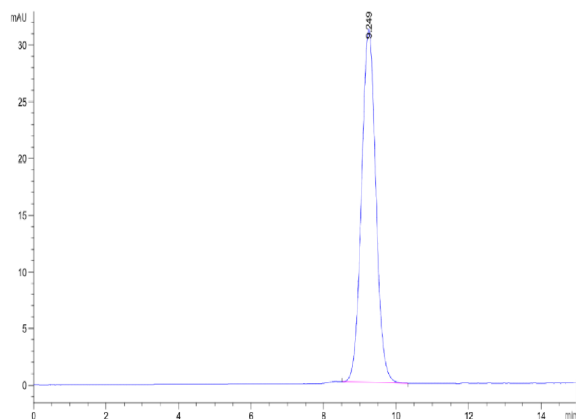
## Assay Data

### Tris-Bis PAGE



Human LY6G6D on Tris-Bis PAGE under reduced condition. The purity is greater than 95%.

### SEC-HPLC

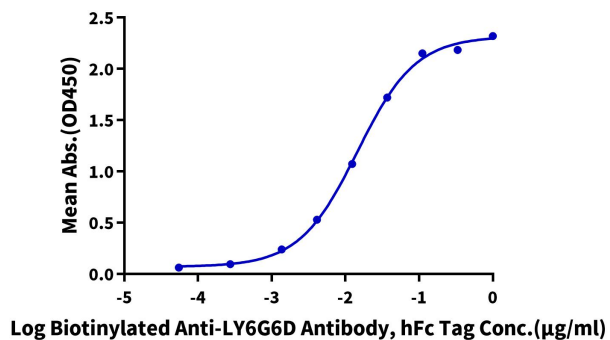


The purity of Human LY6G6D is greater than 95% as determined by SEC-HPLC.

Assay Data

ELISA Data

**Human LY6G6D, hFc Tag ELISA**  
0.05µg Human LY6G6D, hFc Tag Per Well



Immobilized Human LY6G6D, hFc Tag at 0.5µg/ml (100µl/well) on the plate. Dose response curve for Biotinylated Anti-LY6G6D Antibody, hFc Tag with the EC50 of 14.6ng/ml determined by ELISA.