

Human LY6E Protein

Cat. No.    LYE-HM306



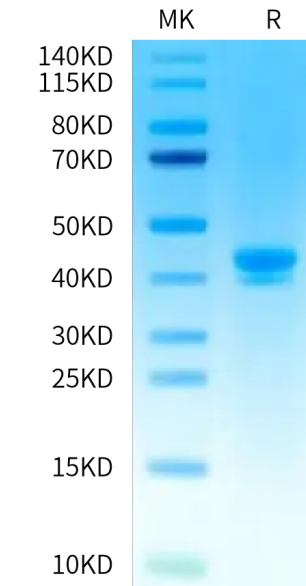
Description	
Source	Recombinant Human LY6E Protein is expressed from HEK293 with mFc (IgG1) tag at the C-terminus. It contains Leu21-Ser101.
Accession	Q16553
Molecular Weight	The protein has a predicted MW of 34.15 kDa. Due to glycosylation, the protein migrates to 40-48 kDa based on Bis-Tris PAGE result.
Endotoxin	Less than 1 EU per µg by the LAL method.
Purity	> 95% as determined by Bis-Tris PAGE > 95% as determined by HPLC

Formulation and Storage	
Formulation	Lyophilized from 0.22 µm filtered solution in PBS (pH 7.4). Normally 8% trehalose is added as protectant before lyophilization.
Reconstitution	Dissolve the lyophilized protein in distilled water. Please refer to the Certificate of Analysis for detailed instructions.
Storage	-20 to -80°C for 12 months as supplied from date of receipt. -80°C for 3 months after reconstitution. Recommend to aliquot the protein into smaller quantities for optimal storage. Please minimize freeze-thaw cycles.

Background	
Lymphocyte antigen 6 complex, locus E (LY6E), also designated as stem cell antigen 2 (SCA2) and thymic shared antigen-1 (TSA-1), is a member of the lymphostromal cell membrane Ly6 superfamily. All Ly6 family members are low-molecular weight (10-12 kDa) proteins that display limited nucleotide and amino acid sequence homologies with one another, but commonly have a conserved cysteine-rich cell surface domain and are anchored to the cell surface via a glycosilphosphatidylinositol (GPI) moiety.	

Assay Data

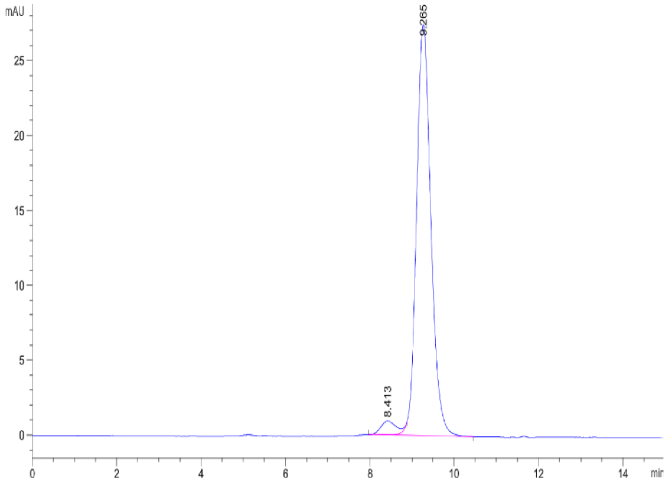
Bis-Tris PAGE



Human LY6E on Bis-Tris PAGE under reduced condition. The purity is greater than 95%.

SEC-HPLC

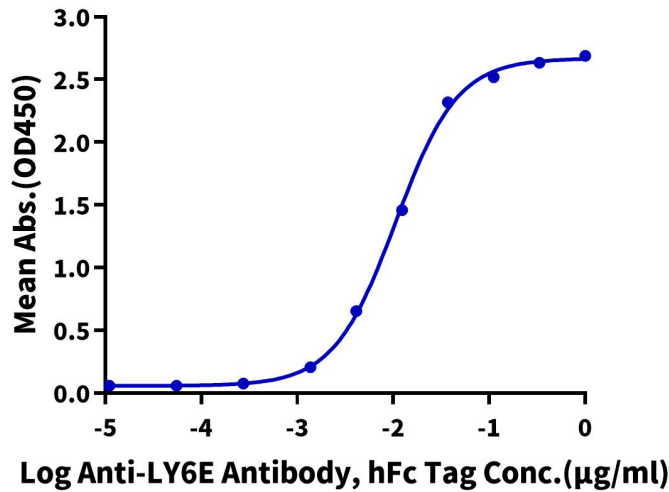
Assay Data



The purity of Human LY6E is greater than 95% as determined by SEC-HPLC.

ELISA Data

**Human LY6E, mFc Tag ELISA**  
0.1 µg Human LY6E, mFc Tag Per Well



Immobilized Human LY6E, mFc Tag at 1 µg/ml (100 µl/well) on the plate. Dose response curve for Anti-LY6E Antibody, hFc Tag with the EC<sub>50</sub> of 10.6 ng/ml determined by ELISA.