

Mouse Siglec-4a/MAG Protein

Cat. No. MAG-MM101

Description

Source	Recombinant Mouse Siglec-4a/MAG Protein is expressed from Expi293 with His tag at the C-terminal. It contains Gly20-Pro516.
Accession	P20917-1
Molecular Weight	The protein has a predicted MW of 56 kDa. Due to glycosylation, the protein migrates to 70-85 kDa based on Tris-Bis PAGE result.
Endotoxin	Less than 1EU per μg by the LAL method.
Purity	> 95% as determined by Tris-Bis PAGE > 95% as determined by HPLC

Formulation and Storage

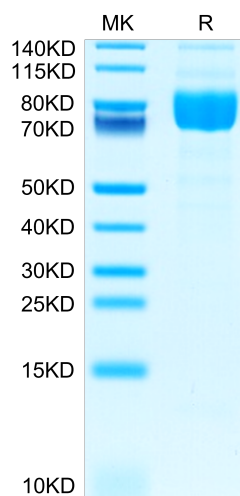
Formulation	Supplied as 0.22 μm filtered solution in PBS (pH 7.4). Please dilute to the desired concentration according to the concentration of the solution shown on the product label.
Storage	Valid for 12 months from date of receipt when stored at -80°C . Recommend to aliquot the protein into smaller quantities for optimal storage. Please do not repeated freeze-thaw cycles.

Background

Siglec-4a, also known as Myelin-Associated Glycoprotein (MAG), is a type I transmembrane glycoprotein belonging to the Siglec family, a subgroup of the Ig superfamily. Adhesion molecule that mediates interactions between myelinating cells and neurons by binding to neuronal sialic acid-containing gangliosides and to the glycoproteins RTN4R and RTN4RL2.

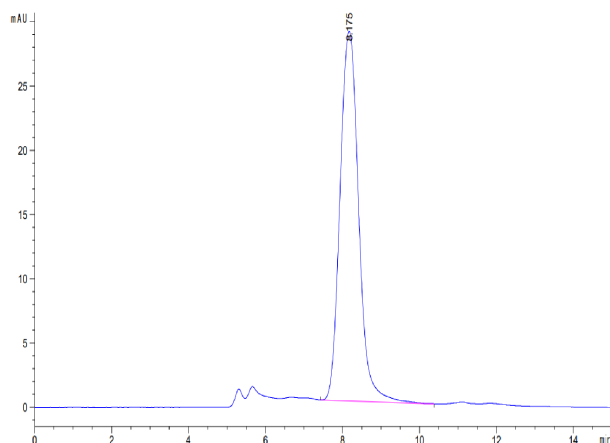
Assay Data

Tris-Bis PAGE



Mouse Siglec-4a/MAG on Tris-Bis PAGE under reduced condition. The purity is greater than 95%.

SEC-HPLC



The purity of Mouse Siglec-4a/MAG is greater than 95% as determined by SEC-HPLC.