

Human MBL2/Mannan Binding Lectin Protein

Cat. No. MBL-HM102

Description

Source	Recombinant Human MBL2/Mannan Binding Lectin Protein is expressed from HEK293 with His tag at the C-Terminus. It contains Glu21-Ile248.
Accession	P11226
Molecular Weight	The protein has a predicted MW of 25.11 kDa. Due to glycosylation, the protein migrates to 30-40 kDa based on Bis-Tris PAGE result.
Endotoxin	Less than 1EU per μg by the LAL method.
Purity	> 95% as determined by Bis-Tris PAGE

Formulation and Storage

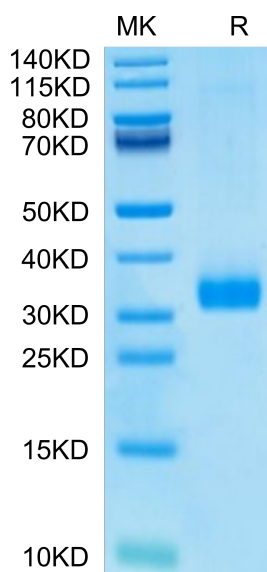
Formulation	Supplied as 0.22 μm filtered solution in PBS (pH 7.4).
Storage	Valid for 12 months from date of receipt when stored at -80°C. Recommend to aliquot the protein into smaller quantities for optimal storage. Please minimize freeze-thaw cycles.

Background

Mannan-binding lectin (MBL) is a vital element in the host innate immune system, which is primarily produced by the liver and secreted into the circulation. It is present in serum and may bind to a plethora of microbial pathogens and mediate opsonization of these by complement-dependent and/or independent mechanisms.

Assay Data

Bis-Tris PAGE



Human MBL2 on Bis-Tris PAGE under reduced condition. The purity is greater than 95%.