

Human MCEMP1 Protein

Cat. No. MCE-HM201

Description

Source	Recombinant Human MCEMP1 Protein is expressed from HEK293 with hFc tag at the N-Terminus. It contains Lys107-Gln187.
Accession	Q8IX19
Molecular Weight	The protein has a predicted MW of 36.6 kDa. Due to glycosylation, the protein migrates to 40-50 kDa based on Bis-Tris PAGE result.
Endotoxin	Less than 1EU per μg by the LAL method.
Purity	> 95% as determined by Bis-Tris PAGE > 95% as determined by HPLC

Formulation and Storage

Formulation	Lyophilized from 0.22 μm filtered solution in PBS (pH 7.4). Normally 8% trehalose is added as protectant before lyophilization.
Reconstitution	Centrifuge the tube before opening. Reconstituting to a concentration more than 100 $\mu\text{g}/\text{ml}$ is recommended. Dissolve the lyophilized protein in distilled water.
Storage	-20 to -80°C for 12 months as supplied from date of receipt. -80°C for 3 months after reconstitution. Recommend to aliquot the protein into smaller quantities for optimal storage. Please minimize freeze-thaw cycles.

Background

A cecal ligation and puncture-induced sepsis mouse model was established to determine the expression of mast cell expression membrane protein 1 (MCEMP1). MCEMP1 in T lymphocytes isolated from sepsis mice were up- or downregulated by exogenous transfection in an attempt to investigate their effects on the release of inflammatory factors, the expression of immunoglobulins, the activity of T cell subsets and natural killer (NK) cells, as well as T lymphocyte apoptosis.

Assay Data

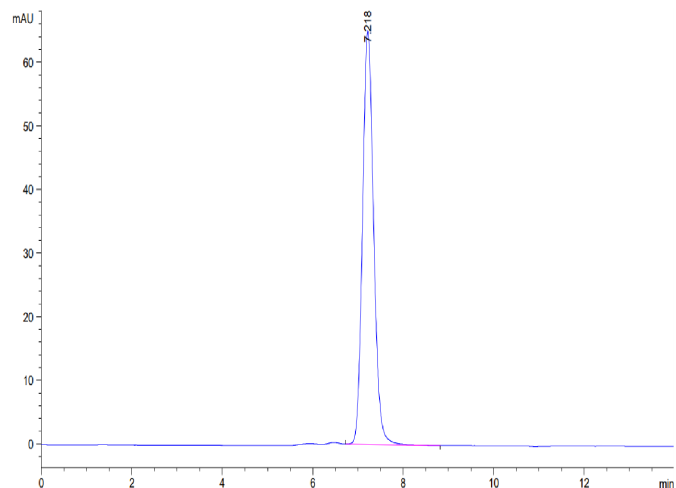
Bis-Tris PAGE



Human MCEMP1 on Bis-Tris PAGE under reduced condition. The purity is greater than 95%.

SEC-HPLC

Assay Data



The purity of Human MCEMP1 is greater than 95% as determined by SEC-HPLC.