

Mouse MEPE Protein

Cat. No. MEP-MM101

Description

Source	Recombinant Mouse MEPE Protein is expressed from Expi293 with His tag at the C-terminal. It contains Ala25-Asp441.
Accession	Q8K4L6
Molecular Weight	The protein has a predicted MW of 45.3 kDa. The protein is cleaved into 2 chains and due to glycosylation, it migrates to 45-60 kDa based on Tris-Bis PAGE result.
Endotoxin	Less than 1EU per µg by the LAL method.
Purity	> 95% as determined by Tris-Bis PAGE

Formulation and Storage

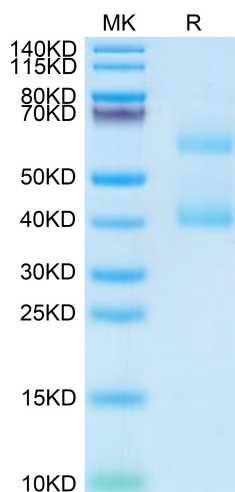
Formulation	Supplied as 0.22µm filtered solution in PBS (pH 7.4). Please dilute to the desired concentration according to the concentration of the solution shown on the product label.
Storage	Valid for 12 months from date of receipt when stored at -80°C. Recommend to aliquot the protein into smaller quantities for optimal storage. Please do not repeated freeze-thaw cycles.

Background

Matrix extracellular phosphoglycoprotein (MEPE) is expressed in bone and teeth where it has multiple functions. The C-terminus of MEPE contains a mineral-binding, acidic serine- and aspartate-rich motif (ASARM) that is also present in other noncollagenous proteins of mineralized tissues. MEPE-derived ASARM peptides function in phosphate homeostasis and direct inhibition of bone mineralization in a phosphorylation-dependent manner.

Assay Data

Tris-Bis PAGE



Mouse MEPE on Tris-Bis PAGE under reduced condition. The purity is greater than 95%.