

Cynomolgus HGF R/c-MET Protein, Ultra Low Endotoxin



Cat. No. MET-CM101-UL

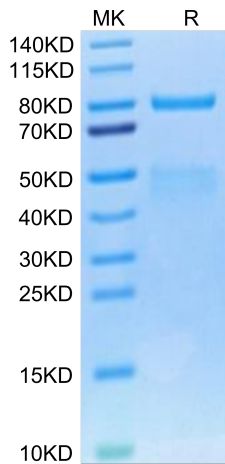
| Description | |
|------------------|---|
| Source | Recombinant Cynomolgus HGF R/c-MET Protein is expressed from HEK293 with His tag at the C-Terminus. It contains Glu25-Asn930. |
| Accession | A0A2K5UM36 |
| Molecular Weight | The mature form of HGF R is a heterodimer which can be cleaved into α and β chain. The protein has a predicted MW of 32.5 kDa (α chain) and 69.9 kDa (β chain). Due to glycosylation, the protein migrates to 45-52 kDa (α chain) and 75-82 kDa (β chain) based on Bis-Tris PAGE result. |
| Endotoxin | Less than 0.01 EU per μ g by the LAL method. |
| Purity | > 95% as determined by Bis-Tris PAGE > 95% as determined by HPLC |

| Formulation and Storage | |
|-------------------------|---|
| Formulation | Lyophilized from 0.22 μ m filtered solution in PBS (pH 7.2). Normally 8% trehalose is added as protectant before lyophilization. |
| Reconstitution | Dissolve the lyophilized protein in distilled water. Please refer to the Certificate of Analysis for detailed instructions. |
| Storage | -20 to -80°C for 12 months as supplied from date of receipt. -80°C for 3 months after reconstitution. Recommend to aliquot the protein into smaller quantities for optimal storage. Please minimize freeze-thaw cycles. |

| Background | |
|---|--|
| c-Met, also called tyrosine-protein kinase Met or hepatocyte growth factor receptor (HGFR), is a protein that in humans is encoded by the MET gene. The protein possesses tyrosine kinase activity. The primary single chain precursor protein is post-translationally cleaved to produce the alpha and beta subunits, which are disulfide linked to form the mature receptor. Following activation by ligand, interacts with the PI3-kinase subunit PIK3R1, PLCG1, SRC, GRB2, STAT3 or the adapter GAB1. | |

Assay Data

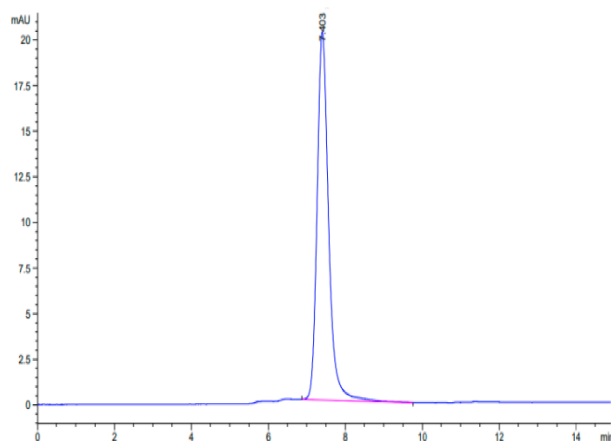
Bis-Tris PAGE



Cynomolgus HGF R on Bis-Tris PAGE under reduced condition. The purity is greater than 95%.

SEC-HPLC

Assay Data



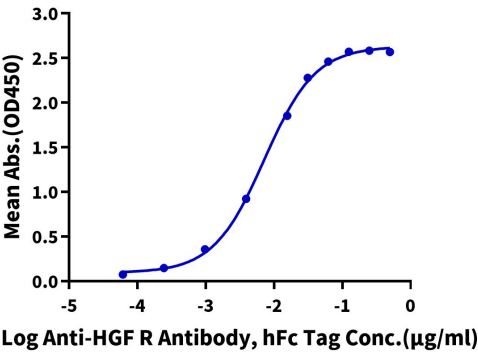
The purity of Cynomolgus HGF R is greater than 95% as determined by SEC-HPLC.

Assay Data

ELISA Data

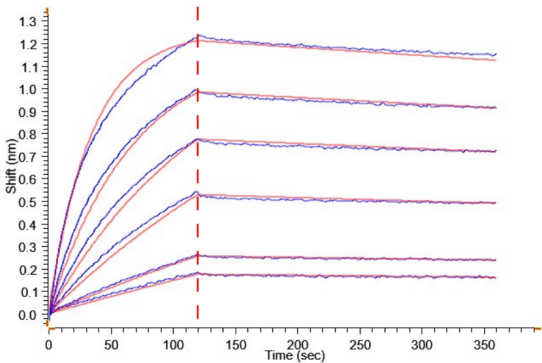
Cynomolgus HGF R, His Tag ELISA

0.5µg Cynomolgus HGF R, His Tag Per Well



Immobilized Cynomolgus HGF R, His Tag at 5µg/ml (100µl/well) on the plate. Dose response curve for Anti-HGF R Antibody, hFc Tag with the EC50 of 7.2ng/ml determined by ELISA (QC Test).

BLI Data



Loaded Anti-HGF R Antibody, hFc Tag on ProA-Biosensor can bind Cynomolgus HGF R, His Tag with an affinity constant of 2.15 nM as determined in BLI assay (Gator® Prime).