

Cat. No. MET-HM111-UL

Description

| | |
|-------------------------|---|
| Source | Recombinant Human HGF R/c-MET Protein is expressed from HEK293 with His tag and Spy tag at the C-terminus. It contains Glu25-Thr932. |
| Accession | P08581-1 |
| Molecular Weight | The mature form of HGF R is a heterodimer which can be cleaved into α and β chain. The protein has a predicted MW of 32.5 kDa (α chain) and 72.5 kDa (β chain). Due to glycosylation, the protein migrates to 45-60 kDa and 85-105 kDa based on Bis-Tris PAGE result. |
| Endotoxin | Less than 0.01 EU per μ g by the LAL method. |
| Purity | > 95% as determined by Bis-Tris PAGE > 95% as determined by HPLC |

Formulation and Storage

| | |
|-----------------------|---|
| Formulation | Lyophilized from 0.22 μ m filtered solution in PBS (pH 7.4). Normally 8% trehalose is added as protectant before lyophilization. |
| Reconstitution | Dissolve the lyophilized protein in distilled water. Please refer to the Certificate of Analysis for detailed instructions. |
| Storage | -20 to -80°C for 12 months as supplied from date of receipt. -80°C for 3 months after reconstitution. Recommend to aliquot the protein into smaller quantities for optimal storage. Please minimize freeze-thaw cycles. |

Background

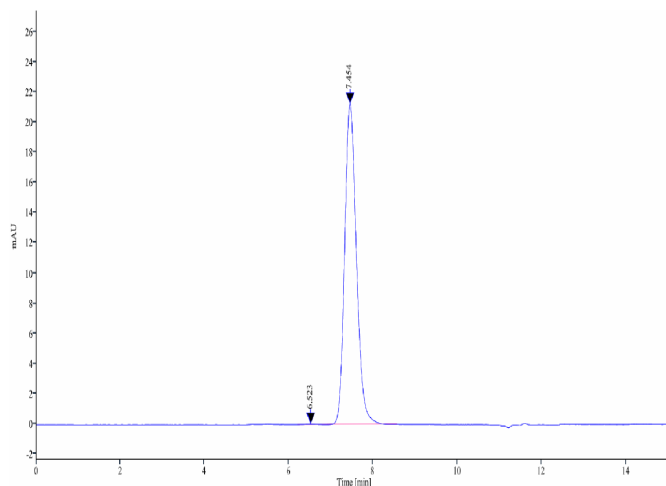
c-Met, also called tyrosine-protein kinase Met or hepatocyte growth factor receptor (HGFR), is a protein that in humans is encoded by the MET gene. The protein possesses tyrosine kinase activity. The primary single chain precursor protein is post-translationally cleaved to produce the alpha and beta subunits, which are disulfide linked to form the mature receptor. Following activation by ligand, interacts with the PI3-kinase subunit PIK3R1, PLCG1, SRC, GRB2, STAT3 or the adapter GAB1.

Assay Data**Bis-Tris PAGE**

Human HGF R on Bis-Tris PAGE under reduced condition. The purity is greater than 95%.

SEC-HPLC

Assay Data

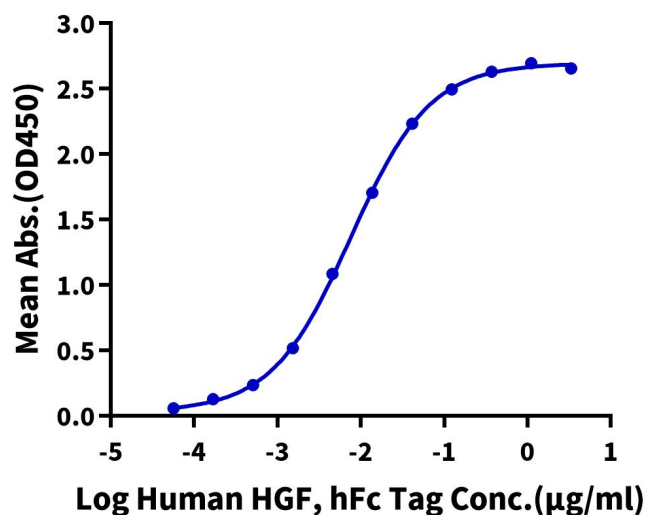


The purity of Human HGF R is greater than 95% as determined by SEC-HPLC.

ELISA Data

Human HGF R, His Tag ELISA

0.2µg Human HGF R, His Tag Per Well



Immobilized Human HGF R, His Tag at 2µg/ml (100µl/well) on the plate. Dose response curve for Human HGF, hFc Tag (Cat. HGF-HM201) with the EC50 of 7.6ng/ml determined by ELISA.