

Cat. No. MET-HM201-UL

Description

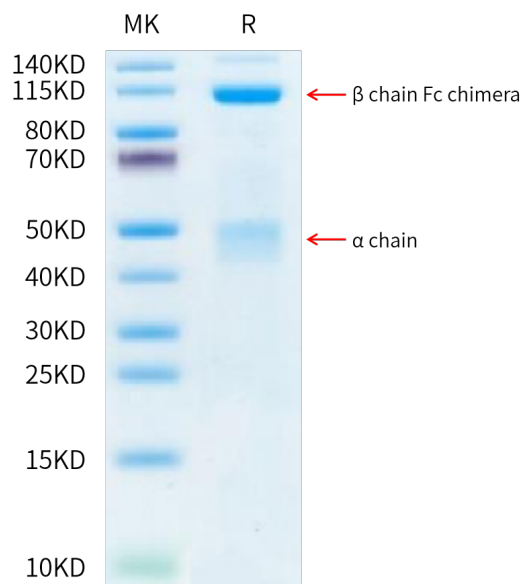
Source	Recombinant Human HGF R/c-MET Protein is expressed from HEK293 with hFc (IgG1) tag at the C-Terminus. It contains Glu25-Thr932.
Accession	P08581-1
Molecular Weight	The mature form of HGF R is a heterodimer which can be cleaved into α and β chain. The protein has a predicted MW of 32.5 kDa (α chain) and 95.9 kDa (β chain Fc chimera). Due to glycosylation, the protein migrates to 45-55 kDa and 100-120 kDa based on Bis-Tris PAGE result.
Endotoxin	Less than 0.01 EU per μ g by the LAL method.
Purity	> 95% as determined by Bis-Tris PAGE > 90% as determined by HPLC

Formulation and Storage

Formulation	Lyophilized from 0.22 μ m filtered solution in PBS (pH 7.4). Normally 8% trehalose is added as protectant before lyophilization.
Reconstitution	Dissolve the lyophilized protein in distilled water. Please refer to the Certificate of Analysis for detailed instructions.
Storage	-20 to -80°C for 12 months as supplied from date of receipt. -80°C for 3 months after reconstitution. Recommend to aliquot the protein into smaller quantities for optimal storage. Please minimize freeze-thaw cycles.

Background

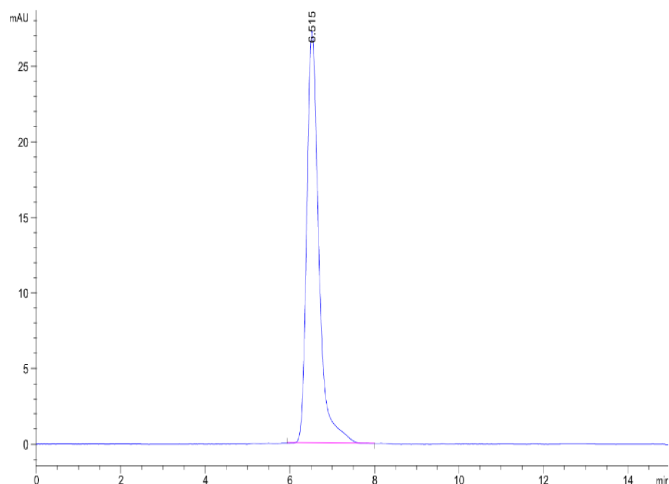
c-Met, also called tyrosine-protein kinase Met or hepatocyte growth factor receptor (HGF R), is a protein that in humans is encoded by the MET gene. The protein possesses tyrosine kinase activity. The primary single chain precursor protein is post-translationally cleaved to produce the alpha and beta subunits, which are disulfide linked to form the mature receptor. Following activation by ligand, interacts with the PI3-kinase subunit PIK3R1, PLCG1, SRC, GRB2, STAT3 or the adapter GAB1. Recruitment of these downstream effectors by MET leads to the activation of several signaling cascades including the RAS-ERK, PI3 kinase-AKT, or PLCgamma-PKC. The RAS-ERK activation is associated with the morphogenetic effects while PI3K/AKT coordinates prosurvival effects. During embryonic development, MET signaling.

Assay Data**Bis-Tris PAGE**

Human HGF R on Bis-Tris PAGE under reduced condition. The purity is greater than 95%.

SEC-HPLC

Assay Data

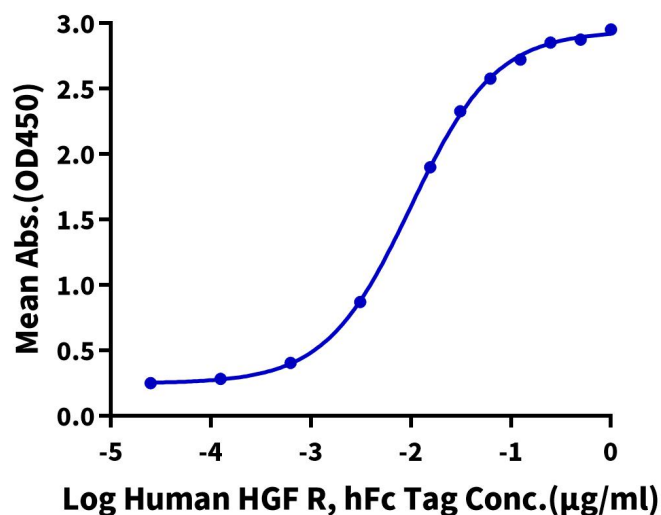


The purity of Human HGF R is greater than 90% as determined by SEC-HPLC.

ELISA Data

Human HGF R, hFc Tag ELISA

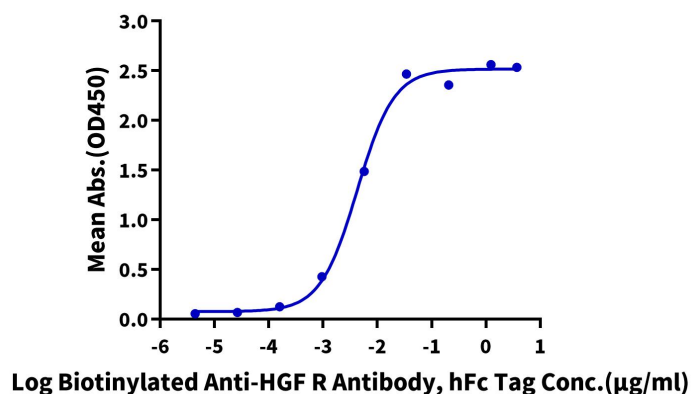
0.2µg Human HGF, His Tag Per Well



Immobilized Human HGF, His Tag at 2 µg/ml (100 µl/Well) on the plate. Dose response curve for Human HGF R, hFc Tag with the EC50 of 9.9 ng/ml determined by ELISA (QC Test).

Human HGF R, hFc Tag ELISA

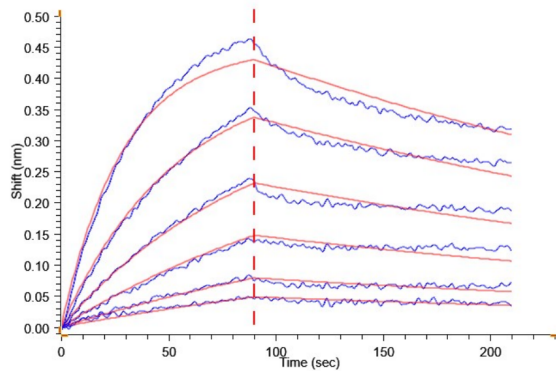
0.5µg Human HGF R, hFc Tag Per Well



Immobilized Human HGF R, hFc Tag at 5 µg/ml (100 µl/Well) on the plate. Dose response curve for Biotinylated Anti-HGF R Antibody, hFc Tag with the EC50 of 4.2 ng/ml determined by ELISA.

BLI Data

Assay Data



Loaded Human HGF R, hFc Tag on ProA-Biosensor can bind Human HGF, His Tag with an affinity constant of 4.32 nM as determined in BLI assay .