

Human CD228/MFI2 Protein

Cat. No. MFI-HM128



Description

Source	Recombinant Human CD228/MFI2 Protein is expressed from HEK293 with His tag at the C-Terminus. It contains Gly20-Cys709.
Accession	P08582-1
Molecular Weight	The protein has a predicted MW of 76.60 kDa. Due to glycosylation, the protein migrates to 78-88 kDa based on Bis-Tris PAGE result.
Endotoxin	Less than 1EU per µg by the LAL method.
Purity	> 95% as determined by Bis-Tris PAGE > 95% as determined by HPLC

Formulation and Storage

Formulation	Lyophilized from 0.22µm filtered solution in PBS (pH 7.4). Normally 8% trehalose is added as protectant before lyophilization.
Reconstitution	Centrifuge the tube before opening. Reconstituting to a concentration more than 100 µg/ml is recommended. Dissolve the lyophilized protein in distilled water.
Storage	-20 to -80°C for 12 months as supplied from date of receipt. -80°C for 3 months after reconstitution. Recommend to aliquot the protein into smaller quantities for optimal storage. Please minimize freeze-thaw cycles.

Background

Melanotransferrin is typically overexpressed in melanoma cells compared to other cell types - including cancer cells - and is efficiently sorted and secreted with nanovesicles, or so-called exosomes, due to its membrane-anchoring by a glycosylphosphatidylinositol. Melanotransferrin is exposed on the surface of exosomes and is accessible for antibody recognition.

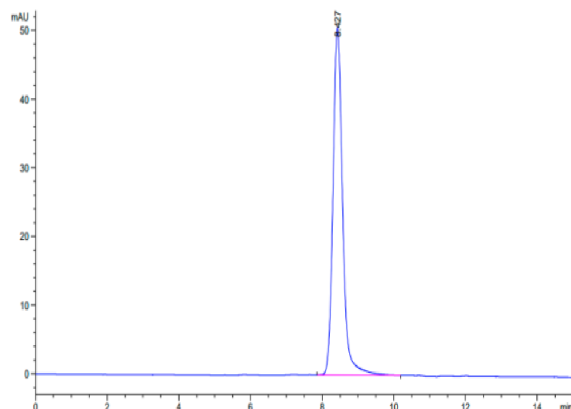
Assay Data

Bis-Tris PAGE



Human CD228 on Bis-Tris PAGE under reduced condition. The purity is greater than 95%.

SEC-HPLC



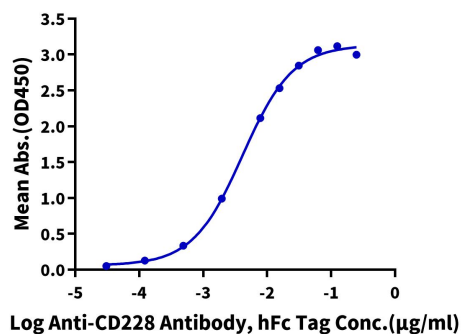
The purity of Human CD228 is greater than 95% as determined by SEC-HPLC.

Assay Data

ELISA Data

Human CD228, His Tag ELISA

0.1 μ g Human CD228, His Tag Per Well



Immobilized Human CD228, His Tag at 1 μ g/ml (100 μ l/well) on the plate. Dose response curve for Anti-CD228 Antibody, hFc Tag with the EC50 of 4.1 ng/ml determined by ELISA (QC Test).