

Cat. No. MHC-HE008B

Description

Source	Recombinant Biotinylated Human HLA-A*02:01&B2M&KRAS WT (KLVVVGAGGV) Monomer Protein is expressed from E.coli with His tag and Avi tag at the C-terminus. It contains Gly25-Thr305(HLA-A*02:01), Ile21-Met119(B2M) and KLVVVGAGGV peptide.
Accession	A0A140T913(HLA-A*02:01)&P61769(B2M)&KLVVVGAGGV
Molecular Weight	The protein has a predicted MW of 35.6 kDa (HLA-A*02:01) and 11.9 kDa (B2M) same as Tris-Bis PAGE result.
Endotoxin	Less than 1EU per µg by the LAL method.
Purity	> 95% as determined by Tris-Bis PAGE > 90% as determined by HPLC

Formulation and Storage

Formulation	Supplied as 0.22 µm filtered solution in PBS (pH 7.4).
Storage	Valid for 12 months from date of receipt when stored at -80°C. Recommend to aliquot the protein into smaller quantities for optimal storage. Please minimize freeze-thaw cycles.

Background

Kirsten rat sarcoma 2 viral oncogene homolog (KRAS) is the most commonly mutated oncogene in human cancer. The developments of many cancers depend on sustained expression and signaling of KRAS, which makes KRAS a high-priority therapeutic target.

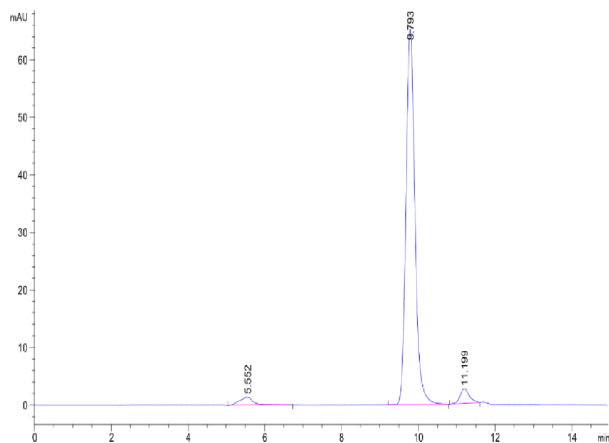
Assay Data

Tris-Bis PAGE



Biotinylated Human HLA-A*02:01&B2M&KRAS WT (KLVVVGAGGV) Monomer on Tris-Bis PAGE under reduced condition. The purity is greater than 95%.

SEC-HPLC



The purity of Biotinylated Human HLA-A*02:01&B2M&KRAS WT (KLVVVGAGGV) Monomer is greater than 90% as determined by SEC-HPLC.