

Human HLA-A*02:01&B2M&P53 R175H (HMTEVVRHC) Monomer Protein



Cat. No. MHC-HE011

Description

Source	Recombinant Human HLA-A*02:01&B2M&P53 R175H (HMTEVVRHC) Monomer Protein is expressed from E.coli with His tag and Avi tag at the C-terminus. It contains Gly25-Thr305 (HLA-A*02:01), Ile21-Met119 (B2M) and HMTEVVRHC peptide.
Accession	AOA140T913(HLA-A*02:01)&P61769(B2M)&HMTEVVRHC
Molecular Weight	The protein has a predicted MW of 35.6 kDa (HLA-A*02:01) and 11.9 kDa (B2M) same as Tris-Bis PAGE result.
Endotoxin	Less than 1EU per µg by the LAL method.
Purity	> 95% as determined by Tris-Bis PAGE > 95% as determined by HPLC

Formulation and Storage

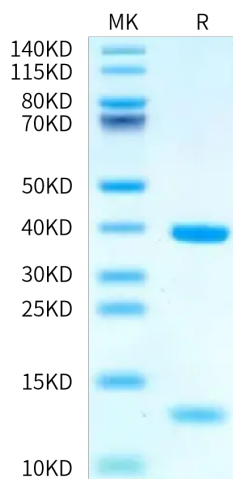
Formulation	Lyophilized from 0.22 µm filtered solution in 20mM Tris, 200mM NaCl (pH 8.0). Normally 8% mannitol is added as protectant before lyophilization.
Reconstitution	Centrifuge the tube before opening. Reconstituting to a concentration more than 100 µg/ml is recommended. Dissolve the lyophilized protein in distilled water.
Storage	-20 to -80°C for 12 months as supplied from date of receipt. -80°C for 3-6 months after reconstitution. 2-8°C for 2-7 days after reconstitution. Recommend to aliquot the protein into smaller quantities for optimal storage. Please minimize freeze-thaw cycles.

Background

p53 is a tumor suppressor protein. Under stressful conditions, p53 tightly regulates cell growth by promoting apoptosis and DNA repair. When p53 becomes mutated, it loses its function, resulting in abnormal cell proliferation and tumor progression. Depending on the p53 mutation, it has been shown to form aggregates leading to negative gain of function of the protein. p53 mutant associated aggregation has been observed in several cancer tissues and has been shown to promote tumor growth.

Assay Data

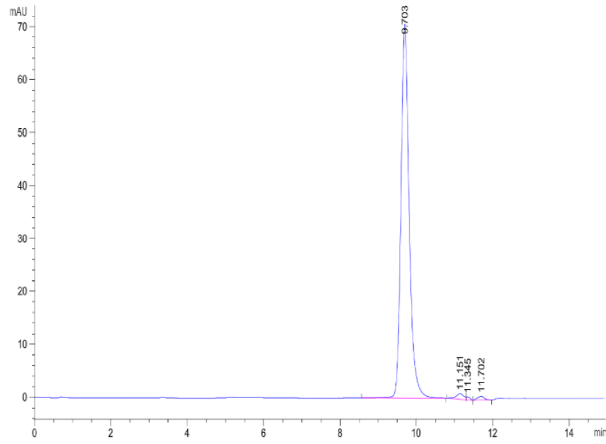
Tris-Bis PAGE



Human HLA-A*02:01&B2M&P53 R175H (HMTEVVRHC) Monomer on Tris-Bis PAGE under reduced condition. The purity is greater than 95%.

SEC-HPLC

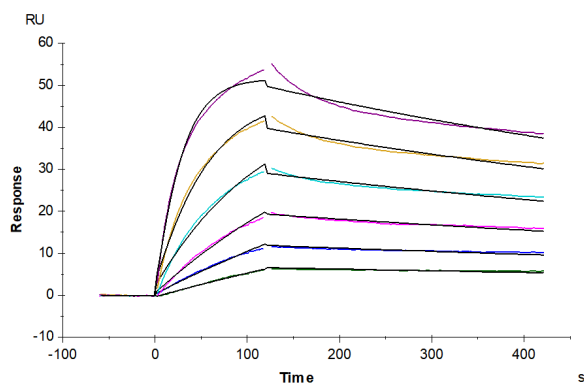
Assay Data



The purity of Human HLA-A*02:01&B2M&P53 R175H (HMTEVVRHC) Monomer is greater than 95% as determined by SEC-HPLC.

Assay Data

SPR Data



Human HLA-A*02:01&B2M&P53 R175H (HMTEVVRHC) Monomer, His Tag captured on CM5 Chip via Anti-His Antibody can bind Anti-HLA-A*02:01&B2M&P53 R175H (HMTEVVRHC) Antibody, hFc Tag with an affinity constant of 2.35 nM as determined in SPR assay (Biacore T200).