

Cat. No. MHC-HE011B

Description

Source	Recombinant Biotinylated Human HLA-A*02:01&B2M&P53 R175H (HMTEVVRHC) Monomer Protein is expressed from E.coli with His tag and Avi tag at the C-terminus. It contains Gly25-Thr305 (HLA-A*02:01), Ile21-Met119 (B2M) and HMTEVVRHC peptide.
Accession	A0A140T913(HLA-A*02:01)&P61769(B2M)&HMTEVVRHC
Molecular Weight	The protein has a predicted MW of 35.6 kDa (HLA-A*02:01) and 11.9 kDa (B2M) same as Tris-Bis PAGE result.
Endotoxin	Less than 1EU per µg by the LAL method.
Purity	> 95% as determined by Tris-Bis PAGE > 95% as determined by HPLC

Formulation and Storage

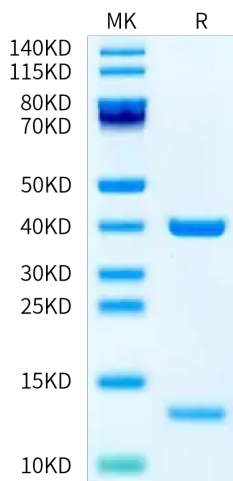
Formulation	Supplied as 0.22 µm filtered solution in 20mM Tris, 200mM NaCl (pH 8.0).
Storage	Valid for 12 months from date of receipt when stored at -80°C. Recommend to aliquot the protein into smaller quantities for optimal storage. Please minimize freeze-thaw cycles.

Background

p53 is a tumor suppressor protein. Under stressful conditions, p53 tightly regulates cell growth by promoting apoptosis and DNA repair. When p53 becomes mutated, it loses its function, resulting in abnormal cell proliferation and tumor progression. Depending on the p53 mutation, it has been shown to form aggregates leading to negative gain of function of the protein. p53 mutant associated aggregation has been observed in several cancer tissues and has been shown to promote tumor growth.

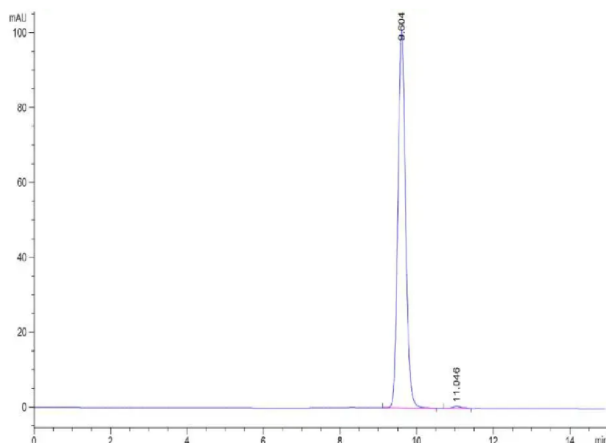
Assay Data

Tris-Bis PAGE



Biotinylated Human HLA-A*02:01&B2M&P53 R175H (HMTEVVRHC) Monomer on Tris-Bis PAGE under reduced condition. The purity is greater than 95%.

SEC-HPLC



The purity of Biotinylated Human HLA-A*02:01&B2M&P53 R175H (HMTEVVRHC) Monomer is greater than 95% as determined by SEC-HPLC.

Biotinylated Human HLA-A*02:01&B2M&P53 R175H (HMTEVVRHC) Monomer Protein

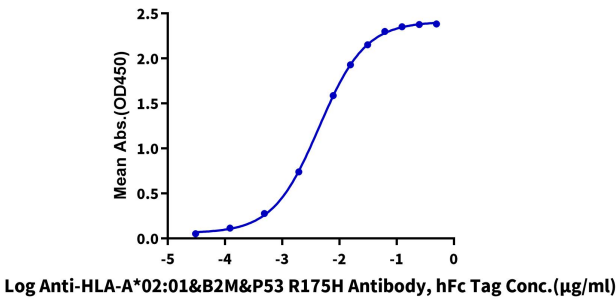


Cat. No. MHC-HE011B

Assay Data

ELISA Data

Biotinylated Human HLA-A*02:01&B2M&P53 R175H (HMTEVVRHC), His Tag ELISA
0.2µg Biotinylated Human HLA-A*02:01&B2M&P53 R175H (HMTEVVRHC), His Tag Per Well



Immobilized Biotinylated Human HLA-A*02:01&B2M&P53 R175H (HMTEVVRHC) Monomer, His Tag at 2µg/ml (100µl/well) on the streptavidin precoated plate (5µg/ml). Dose response curve for Anti-HLA-A*02:01&B2M&P53 R175H (HMTEVVRHC) Antibody, hFc Tag with the EC50 of 4.4ng/ml determined by ELISA.