

Biotinylated Human HLA-A\*02:01&B2M&PLK1 (AAPGAPAAA) Monomer Protein



Cat. No. MHC-HE027B

Description	
Source	Recombinant Biotinylated Human HLA-A*02:01&B2M&PLK1 (AAPGAPAAA) Monomer Protein is expressed from E.coli with His tag and Avi tag at the C-terminus. It contains Gly25-Thr305(HLA-A*02:01), Ile21-Met119(B2M) and AAPGAPAAA peptide.
Accession	A0A140T913(HLA-A*02:01)&P61769(B2M)&AAPGAPAAA
Molecular Weight	The protein has a predicted MW of 35.6 kDa (HLA-A*02:01) and 11.9 kDa (B2M) same as Bis-Tris PAGE result.
Endotoxin	Less than 1 EU per µg by the LAL method.
Purity	> 95% as determined by Bis-Tris PAGE > 95% as determined by HPLC

Formulation and Storage	
Formulation	Supplied as 0.22 µm filtered solution in 20mM Tris, 200mM NaCl (pH 8.0).
Storage	Valid for 12 months from date of receipt when stored at -80°C. Recommend to aliquot the protein into smaller quantities for optimal storage. Please minimize freeze-thaw cycles.

Background	
A key regulator of cell division is polo-like kinase 1 (PLK1), a member of the serine/threonine kinase family that plays an important role in regulating the mitotic and meiotic cell cycle. The phosphorylation of specific substrates mediated by PLK1 controls nuclear envelope breakdown (NEBD), centrosome maturation, proper spindle assembly, chromosome segregation, and cytokinesis.	

Assay Data

Bis-Tris PAGE



Biotinylated Human HLA-A\*02:01&B2M&PLK1 (AAPGAPAAA) Monomer on Bis-Tris PAGE under reduced condition. The purity is greater than 95%.

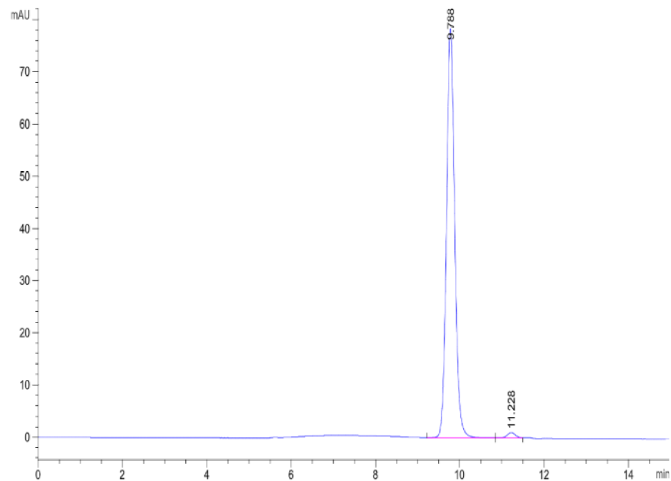
SEC-HPLC

Biotinylated Human HLA-A\*02:01&B2M&PLK1 (AAPGAPAAA) Monomer Protein



Cat. No. MHC-HE027B

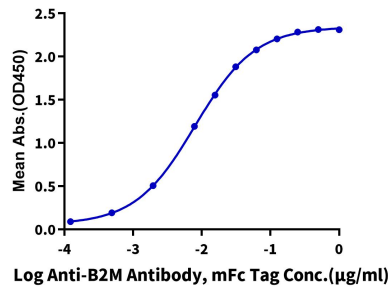
Assay Data



The purity of Biotinylated Human HLA-A\*02:01&B2M&PLK1 (AAPGAPAAA) Monomer is greater than 95% as determined by SEC-HPLC.

ELISA Data

**Biotinylated Human HLA-A\*02:01&B2M&PLK1 (AAPGAPAAA) Monomer, His Tag ELISA**  
0.05µg Biotinylated Human HLA-A\*02:01&B2M&PLK1 (AAPGAPAAA) Monomer, His Tag Per Well



Immobilized Biotinylated Human HLA-A\*02:01&B2M&PLK1 (AAPGAPAAA) Monomer, His Tag at 1µg/ml (100µl/Well) on streptavidin (5µg/ml) precoated plate. Dose response curve for Anti-B2M Antibody, mFc Tag with the EC50 of 14.0ng/ml determined by ELISA.