

Human HLA-A\*02:01&B2M&MART-1 A27L (ELAGIGILTV) Monomer Protein



Cat. No. MHC-HE035

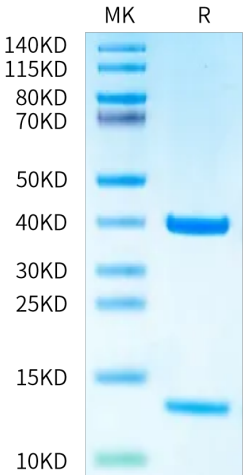
Description	
Source	Recombinant Human HLA-A*02:01&B2M&MART-1 A27L (ELAGIGILTV) Monomer Protein is expressed from E.coli with His tag and Avi tag at the C-terminus. It contains Gly25-Thr305(HLA-A*02:01), Ile21-Met119(B2M) and ELAGIGILTV peptide.
Accession	A0A140T913(HLA-A*02:01)&P61769(B2M)&ELAGIGILTV
Molecular Weight	The protein has a predicted MW of 35.6 kDa (HLA-A*02:01) and 11.9 kDa (B2M) same as Bis-Tris PAGE result.
Endotoxin	Less than 1EU per µg by the LAL method.
Purity	>95% as determined by Bis-Tris PAGE >95% as determined by HPLC

Formulation and Storage	
Formulation	Supplied as 0.22 µm filtered solution in 20mM Tris, 200mM NaCl (pH 8.0).
Storage	Valid for 12 months from date of receipt when stored at -80°C. Recommend to aliquot the protein into smaller quantities for optimal storage. Please minimize freeze-thaw cycles.

Background	
Melanoma antigen recognized by T cell-1 (Mart-1), one of the melanosome-specific proteins, also recognized by cytotoxicity T lymphocytes as a marker. Mart-1 is considered to play a critical role in the immunotherapy for melanoma.	

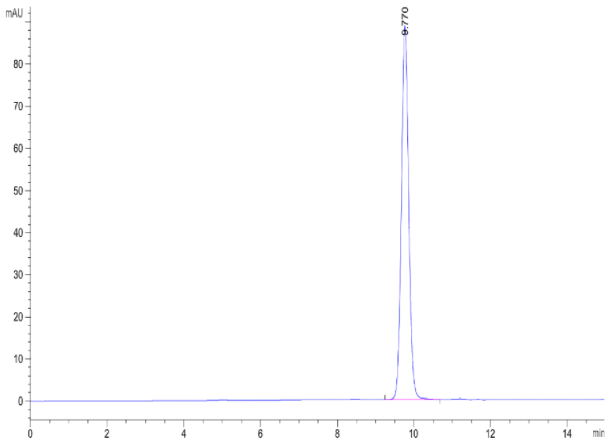
Assay Data

Bis-Tris PAGE



Human HLA-A\*02:01&B2M&MART-1 A27L (ELAGIGILTV) Monomer on Bis-Tris PAGE under reduced condition. The purity is greater than 95%.

SEC-HPLC



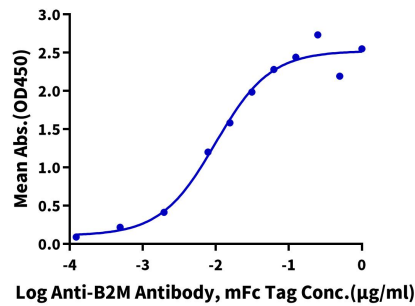
The purity of Human HLA-A\*02:01&B2M&MART-1 A27L (ELAGIGILTV) Monomer is greater than 95% as determined by SEC-HPLC.

Cat. No. MHC-HE035

Assay Data

ELISA Data

Human HLA-A\*02:01&B2M&MART-1 A27L (ELAGIGILTV) Monomer, His Tag ELISA  
0.05µg Human HLA-A\*02:01&B2M&MART-1 A27L (ELAGIGILTV) Monomer, His Tag Per Well



Immobilized Human HLA-A\*02:01&B2M&MART-1 A27L (ELAGIGILTV) Monomer, His Tag at 0.5µg/ml (100µl/well) on the plate. Dose response curve for Anti-B2M Antibody, mFc Tag with the EC50 of 9.9ng/ml determined by ELISA (QC Test).