

Biotinylated Human HLA-A\*02:01&B2M&PRAME (SLLQHLIGL) Monomer Protein



Cat. No. MHC-HE045B

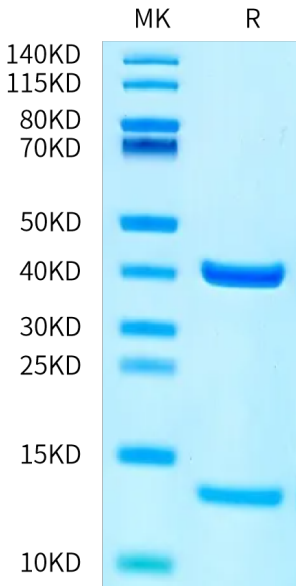
Description	
Source	Recombinant Biotinylated Human HLA-A*02:01&B2M&PRAME (SLLQHLIGL) Monomer Protein is expressed from E.coli with His tag and Avi tag at the C-terminus. It contains Gly25-Thr305(HLA-A*02:01), Ile21-Met119(B2M) and SLLQHLIGL peptide.
Accession	A0A140T913(HLA-A*02:01)&P61769(B2M)&SLLQHLIGL
Molecular Weight	The protein has a predicted MW of 35.6 kDa (HLA-A*02:01) and 11.9 kDa (B2M) same as Bis-Tris PAGE result.
Endotoxin	Less than 1 EU per µg by the LAL method.
Purity	> 95% as determined by Bis-Tris PAGE > 95% as determined by HPLC

Formulation and Storage	
Formulation	Supplied as 0.22 µm filtered solution in 20mM Tris, 200mM NaCl (pH 8.0).
Storage	Valid for 12 months from date of receipt when stored at -80°C. Recommend to aliquot the protein into smaller quantities for optimal storage. Please minimize freeze-thaw cycles.

Background	
PRAME (PReferentially expressed Antigen in MELanoma) is a melanoma-associated antigen expressed in cutaneous and ocular melanomas and some other malignant neoplasms, while its expression in normal tissue and benign tumors is limited.	

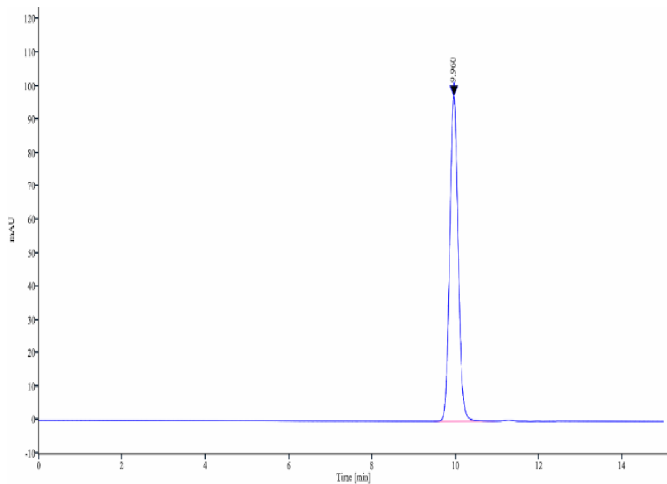
Assay Data

Bis-Tris PAGE



Biotinylated Human HLA-A\*02:01&B2M&PRAME (SLLQHLIGL) Monomer on Bis-Tris PAGE under reduced condition. The purity is greater than 95%.

SEC-HPLC



The purity of Biotinylated Human HLA-A\*02:01&B2M&PRAME (SLLQHLIGL) Monomer is greater than 95% as determined by SEC-HPLC.

Biotinylated Human HLA-A\*02:01&B2M&PRAME (SLLQHLIGL) Monomer Protein

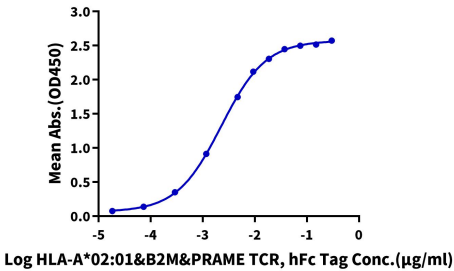


Cat. No. MHC-HE045B

Assay Data

ELISA Data

Biotinylated Human HLA-A\*02:01&B2M&PRAME (SLLQHLIGL) Monomer, His Avi Tag ELISA  
0.1µg Biotinylated Human HLA-A\*02:01&B2M&PRAME (SLLQHLIGL) Monomer, His Avi Tag Per Well



Immobilized Biotinylated Human HLA-A\*02:01&B2M&PRAME (SLLQHLIGL) Monomer, His Avi Tag at 1µg/ml (100µl/well) on the streptavidin precoated plate (5µg/ml). Dose response curve for HLA-A\*02:01&B2M&PRAME TCR, hFc Tag with the EC50 of 2.3ng/ml determined by ELISA.