

Human HLA-A*02:01&B2M&MAGE-A4 (GVYDGREHTV) Monomer Protein



Cat. No. MHC-HE047

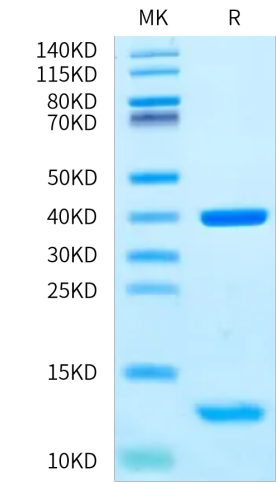
Description	
Source	Recombinant Human HLA-A*02:01&B2M&MAGE-A4 (GVYDGREHTV) Monomer Protein is expressed from E.coli with His tag and Avi tag at the C-terminus. It contains Gly25-Thr305(HLA-A*02:01), Ile21-Met119(B2M) and GVYDGREHTV peptide.
Accession	A0A140T913(HLA-A*02:01)&P61769(B2M)&GVYDGREHTV
Molecular Weight	The protein has a predicted MW of 35.6 kDa (HLA-A*02:01) and 11.9 kDa (B2M) same as Bis-Tris PAGE result.
Endotoxin	Less than 1 EU per µg by the LAL method.
Purity	> 95% as determined by Bis-Tris PAGE > 95% as determined by HPLC

Formulation and Storage	
Formulation	Supplied as 0.22 µm filtered solution in 20mM Tris, 200mM NaCl (pH 8.0).
Storage	Valid for 12 months from date of receipt when stored at -80°C. Recommend to aliquot the protein into smaller quantities for optimal storage. Please minimize freeze-thaw cycles.

Background	
Melanoma-associated antigen 4 is a protein that in humans is encoded by the MAGEA4 gene.The MAGE- A4 antigen is among the most commonly expressed cancer testis antigens. The Human HLA-A*0201 MAGE-A4 (GVYDGREHTV) complex Protein is a complex of HLA-A*0201 of the MHC Class I, B2M and GVYDGREHTV peptide of the MAGE-A4.	

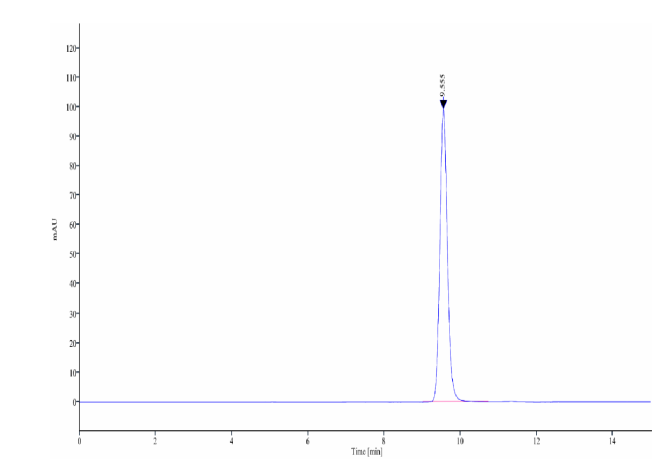
Assay Data

Bis-Tris PAGE



Human HLA-A*02:01&B2M&MAGE-A4 (GVYDGREHTV) Monomer on Bis-Tris PAGE under reduced condition. The purity is greater than 95%.

SEC-HPLC



The purity of Human HLA-A*02:01&B2M&MAGE-A4 (GVYDGREHTV) Monomer is greater than 95% as determined by SEC-HPLC.

Human HLA-A*02:01&B2M&MAGE-A4 (GVYDGREHTV) Monomer Protein

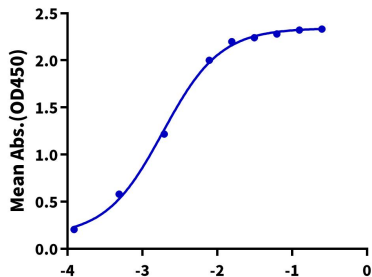


Cat. No. MHC-HE047

Assay Data

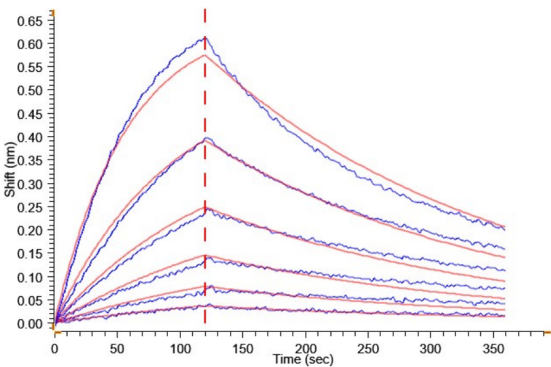
ELISA Data

Human HLA-A*02:01&B2M&MAGE-A4 (GVYDGREHTV) Monomer, His Tag ELISA
0.2µg Human HLA-A*02:01&B2M&MAGE-A4 (GVYDGREHTV) Monomer, His Tag Per Well



Immobilized Human HLA-A*02:01&B2M&MAGE-A4 (GVYDGREHTV) Monomer, His Tag at 2µg/ml (100µl/well) on the plate. Dose response curve for Anti-HLA-A*02:01&B2M&MAGE-A4 Antibody, hFc Tag with the EC50 of 1.9ng/ml determined by ELISA.

BLI Data



Loaded Anti-HLA-A*02:01&B2M&MAGE-A4 (GVYDGREHTV) Antibody, hFc Tag on ProA-Biosensor can bind Human HLA-A*02:01&B2M&MAGE-A4 (GVYDGREHTV) Monomer, His Tag with an affinity constant of 16.40 nM as determined in BLI assay (Gator® Prime).