

Biotinylated Human HLA-A*02:01&B2M&NY-ESO-1 (SLLMWITQC) Monomer Protein



Cat. No. MHC-HE446B

Description

Source	Recombinant Biotinylated Human HLA-A*02:01&B2M&NY-ESO-1 (SLLMWITQC) Monomer Protein is expressed from E.coli with His tag and Avi tag at the C-Terminus. It contains Gly25-Thr305(HLA-A*02:01), Ile21-Met119(B2M) and SLLMWITQC peptide.
Accession	A0A140T913(HLA-A*02:01)&P61769(B2M)&SLLMWITQC
Molecular Weight	The protein has a predicted MW of 35.6 kDa (HLA-A*02:01) and 11.9 kDa (B2M) same as Bis-Tris PAGE result.
Endotoxin	Less than 1 EU per µg by the LAL method.
Purity	> 95% as determined by Bis-Tris PAGE > 95% as determined by HPLC

Formulation and Storage

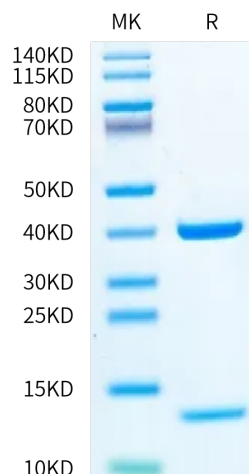
Formulation	Supplied as 0.22 µm filtered solution in 20mM Tris, 0.2M NaCl (pH 8.0).
Storage	Valid for 12 months from date of receipt when stored at -80°C. Recommend to aliquot the protein into smaller quantities for optimal storage. Please minimize freeze-thaw cycles.

Background

NY-ESO-1 or New York esophageal squamous cell carcinoma 1 is a well-known cancer-testis antigen (CTAs) with re-expression in numerous cancer types. Its ability to elicit spontaneous humoral and cellular immune responses, together with its restricted expression pattern, have rendered it a good candidate target for cancer immunotherapy.

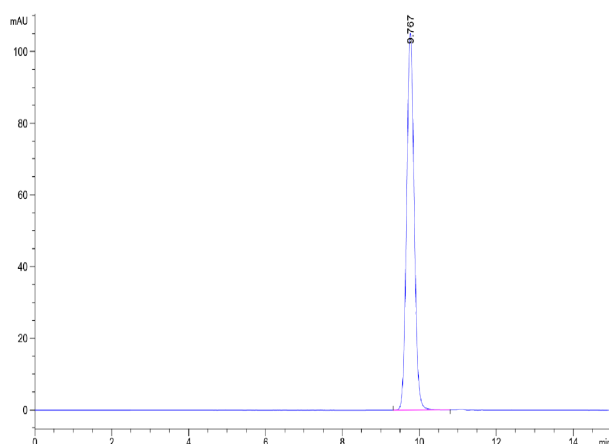
Assay Data

Bis-Tris PAGE



Biotinylated Human HLA-A*02:01&B2M&NY-ESO-1 (SLLMWITQC) Monomer on Bis-Tris PAGE under reduced condition. The purity is greater than 95%.

SEC-HPLC



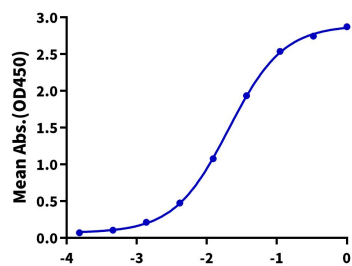
The purity of Biotinylated Human HLA-A*02:01&B2M&NY-ESO-1 (SLLMWITQC) Monomer is greater than 95% as determined by SEC-HPLC.

Assay Data

ELISA Data

Biotinylated Human HLA-A*02:01&B2M&NY-ESO-1 (SLLMWITQC), His Avi Tag ELISA

0.05µg Anti-HLA-A*02:01&B2M&NY-ESO-1 Antibody, hFc Tag Per Well



Immobilized Anti-HLA-A*02:01&B2M&NY-ESO-1 Antibody, hFc Tag at 0.5µg/ml (100µl/well) on the plate. Dose response curve for Biotinylated Human HLA-A*02:01&B2M&NY-ESO-1 (SLLMWITQC) Monomer, His Avi Tag with the EC50 of 20.6ng/ml determined by ELISA.

Log Biotinylated Human HLA-A*02:01&B2M&NY-ESO-1, His Avi Tag Conc.(µg/ml)