

Human HLA-A*02:01&B2M&NY-ESO-1 (SLLMWITQC) Tetramer Protein

Cat. No. MHC-HE446T

Description

Source	Recombinant Human HLA-A*02:01&B2M&NY-ESO-1 (SLLMWITQC) Tetramer Protein is expressed from E.coli with His tag and Avi tag at the C-Terminus,tetramer is assembled by biotinylated monomer and streptavidin. It contains Gly25-Thr305 (HLA-A*02:01), Ile21-Met119 (B2M) and SLLMWITQC peptide.
Accession	A0A140T913(HLA-A*02:01)&P61769(B2M)&SLLMWITQC
Molecular Weight	The protein has a predicted MW of 258 kDa. The protein migrates to 120-180 kDa (HLA-A*02:01&streptavidin tetramer) and 11.9 kDa (B2M) based on Bis-Tris PAGE result under Non reducing (N) condition.
Endotoxin	Less than 1EU per µg by the LAL method.
Purity	> 95% as determined by Bis-Tris PAGE > 95% as determined by HPLC

Formulation and Storage

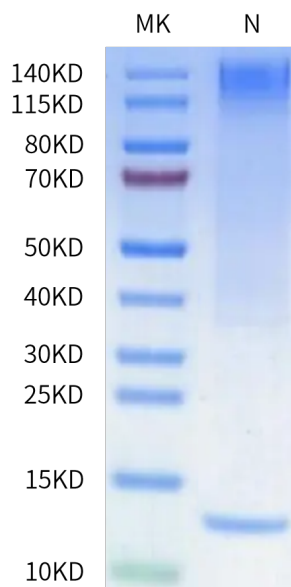
Formulation	Lyophilized from 0.22 µm filtered solution in 20mM Tris, 150mM NaCl (pH 8.0). Normally 8% trehalose is added as protectant before lyophilization.
Reconstitution	Centrifuge the tube before opening. Reconstituting to a concentration more than 100 µg/ml is recommended. Dissolve the lyophilized protein in distilled water.
Storage	-20 to -80°C for 12 months as supplied from date of receipt. -80°C for 3 months after reconstitution. Recommend to aliquot the protein into smaller quantities for optimal storage. Please minimize freeze-thaw cycles.

Background

NY-ESO-1 or New York esophageal squamous cell carcinoma 1 is a well-known cancer-testis antigen (CTAs) with re-expression in numerous cancer types. Its ability to elicit spontaneous humoral and cellular immune responses, together with its restricted expression pattern, have rendered it a good candidate target for cancer immunotherapy.

Assay Data

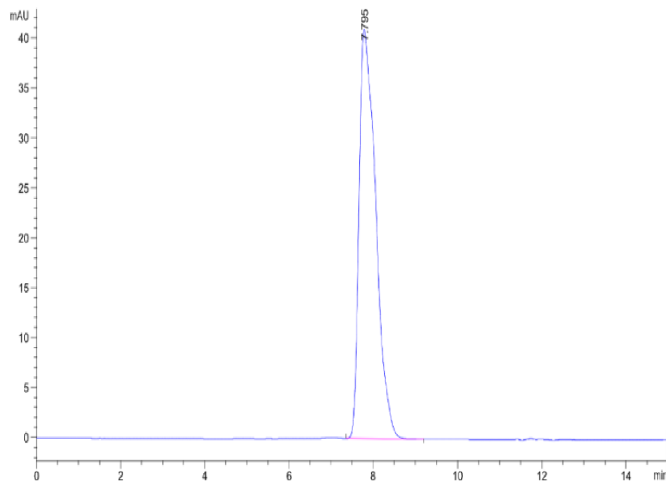
Bis-Tris PAGE



Human HLA-A*02:01&B2M&NY-ESO-1 (SLLMWITQC) Tetramer on Bis-Tris PAGE under Non reducing (N) condition. The purity is greater than 95%.

SEC-HPLC

Assay Data

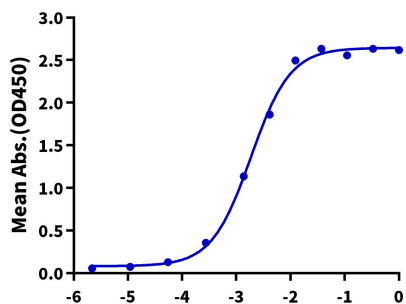


The purity of Human HLA-A*02:01&B2M&NY-ESO-1 (SLLMWITQC) Tetramer is greater than 95% as determined by SEC-HPLC.

ELISA Data

Human HLA-A*02:01&B2M&NY-ESO-1 Tetramer, His Tag ELISA

0.5µg Human HLA-A*02:01&B2M&NY-ESO-1 Tetramer, His Tag Per Well



Immobilized Human HLA-A*02:01&B2M&NY-ESO-1 (SLLMWITQC) Tetramer, His Tag at 5µg/ml (100µl/well) on the plate. Dose response curve for Anti-HLA-A*02:01&B2M&NY-ESO-1 (SLLMWITQC) Antibody, hFc Tag with the EC₅₀ of 1.9ng/ml determined by ELISA.

Log Anti-HLA-A*02:01&B2M&NY-ESO-1 Antibody, hFc Tag Conc. (µg/ml)