

Chimeric HLA-A*02:01 ($\alpha 3$) & mB2M&NY-ESO-1 (SLLMWITQC) Monomer Protein



Cat. No. MHC-HM151

Description

| | |
|-------------------------|---|
| Source | Recombinant Chimeric HLA-A*02:01 ($\alpha 3$) & mB2M&NY-ESO-1 (SLLMWITQC) Monomer Protein is expressed from HEK293 with His tag at the C-terminus. It contains Gly25-Thr206 (Human HLA-A*02:01 $\alpha 1$ & $\alpha 2$) and Asp207-Glu299 (Mouse H-2Ld $\alpha 3$), Ile21-Met119 (mB2M) and SLLMWITQC peptide. |
| Accession | A0A140T913(Human HLA-A*02:01 $\alpha 1$ & $\alpha 2$)&P01897(Mouse H-2Ld $\alpha 3$)&P01887(Mouse B2M)&SLLMWITQC |
| Molecular Weight | The protein has a predicted MW of 48.02 kDa. Due to glycosylation, the protein migrates to 50-65 kDa based on Tris-Bis PAGE result. |
| Endotoxin | Less than 1EU per μg by the LAL method. |
| Purity | > 95% as determined by Tris-Bis PAGE |

Formulation and Storage

| | |
|--------------------|---|
| Formulation | Supplied as 0.22 μm filtered solution in PBS (pH 7.4). |
| Storage | Valid for 12 months from date of receipt when stored at -80°C . Recommend to aliquot the protein into smaller quantities for optimal storage. Please minimize freeze-thaw cycles. |

Background

NY-ESO-1 or New York esophageal squamous cell carcinoma 1 is a well-known cancer-testis antigen (CTAs) with re-expression in numerous cancer types. Its ability to elicit spontaneous humoral and cellular immune responses, together with its restricted expression pattern, have rendered it a good candidate target for cancer immunotherapy.

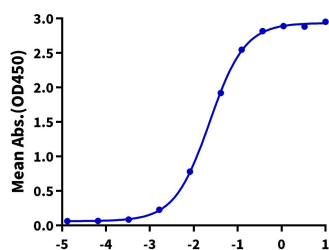
Assay Data

Tris-Bis PAGE

Chimeric HLA-A*02:01 ($\alpha 3$) & mB2M&NY-ESO-1 (SLLMWITQC) Monomer on Tris-Bis PAGE under reduced condition. The purity is greater than 95%.

ELISA Data

Chimeric HLA-A*02:01 ($\alpha 3$) & mB2M&NY-ESO-1 (SLLMWITQC), His Tag ELISA
0.5 μg Anti-HLA-A*02:01&B2M&NY-ESO-1 (SLLMWITQC) Antibody, hFc Tag Per Well

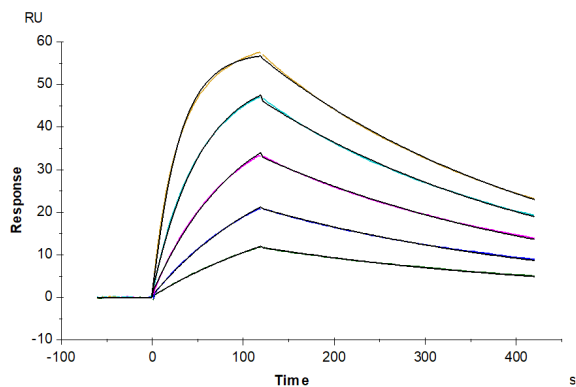


Immobilized Anti-HLA-A*02:01&B2M&NY-ESO-1 (SLLMWITQC) Antibody, hFc Tag at 5 $\mu\text{g}/\text{ml}$ (100 $\mu\text{l}/\text{well}$) on the plate. Dose response curve for Chimeric HLA-A*02:01 ($\alpha 3$) & mB2M&NY-ESO-1 (SLLMWITQC) Monomer, His Tag with the EC50 of 23.0ng/ml determined by ELISA (QC Test).

Log Chimeric HLA-A*02:01 ($\alpha 3$) & mB2M&NY-ESO-1 (SLLMWITQC), His Tag Conc. ($\mu\text{g}/\text{ml}$)

Assay Data

SPR Data



Anti-HLA-A*02:01&B2M&NY-ESO-1 (SLLMWITQC) Antibody, hFc Tag captured on CM5 Chip via Protein A can bind Chimeric HLA-A*02:01($\alpha 3$)&mB2M&NY-ESO-1(SLLMWITQC) Monomer, His Tag with an affinity constant of 9.32 nM as determined in SPR assay (Biacore T200).