

# Human HLA-A\*02:01&B2M&MAGE-A4 (GVYDGREHTV) Tetramer Protein



Cat. No. MHC-HM401T

## Description

<b>Source</b>	Recombinant Human HLA-A*02:01&B2M&MAGE-A4 (GVYDGREHTV) Tetramer Protein is expressed from HEK293 with His tag and Avi tag at the C-Terminus, tetramer is assembled by biotinylated monomer and streptavidin. It contains Gly25-Thr305(HLA-A*02:01), Ile21-Met119(B2M) and GVYDGREHTV peptide.
<b>Accession</b>	A0A140T913(HLA-A*02:01)&P61769(B2M)&GVYDGREHTV
<b>Molecular Weight</b>	The protein has a predicted MW of 258 kDa. Due to glycosylation, the protein migrates to 260-265 kDa under Non reducing (N) condition based on Bis-Tris PAGE result.
<b>Endotoxin</b>	Less than 1EU per µg by the LAL method.
<b>Purity</b>	> 95% as determined by Bis-Tris PAGE > 95% as determined by HPLC

## Formulation and Storage

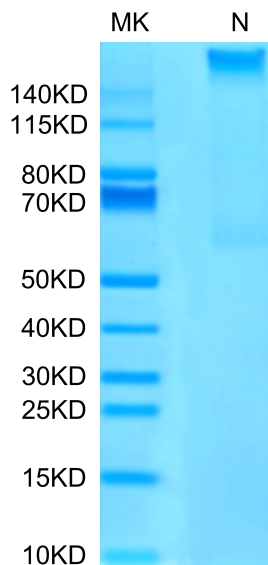
<b>Formulation</b>	Lyophilized from 0.22µm filtered solution in PBS (pH 7.4). Normally 8% trehalose is added as protectant before lyophilization.
<b>Reconstitution</b>	Centrifuge the tube before opening. Reconstituting to a concentration more than 100 µg/ml is recommended. Dissolve the lyophilized protein in distilled water.
<b>Storage</b>	-20 to -80°C for 24 months as supplied from date of receipt. -80°C for 3 months after reconstitution. Recommend to aliquot the protein into smaller quantities for optimal storage. Please minimize freeze-thaw cycles.

## Background

Melanoma-associated antigen 4 is a protein that in humans is encoded by the MAGEA4 gene. The MAGE- A4 antigen is among the most commonly expressed cancer testis antigens. The Human HLA-A\*0201 MAGE-A4 (GVYDGREHTV) complex Protein is a complex of HLA-A\*0201 of the MHC Class I, B2M and GVYDGREHTV peptide of the MAGE-A4.

## Assay Data

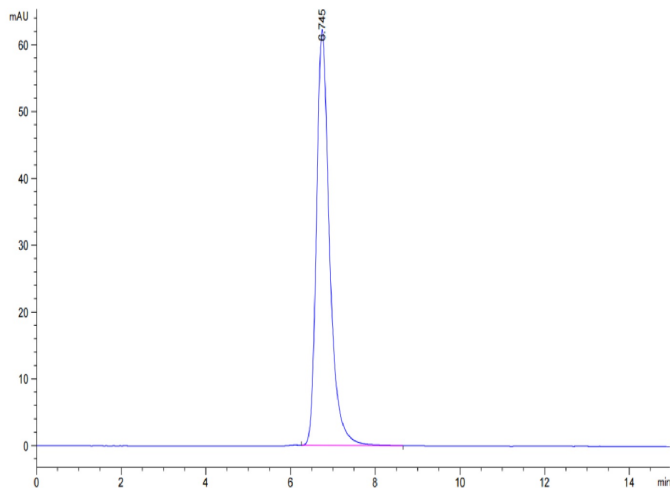
### Bis-Tris PAGE



Human HLA-A\*02:01&B2M&MAGE-A4 (GVYDGREHTV) Tetramer on Bis-Tris PAGE under Non reducing (N) condition. The purity is greater than 95%.

### SEC-HPLC

Assay Data

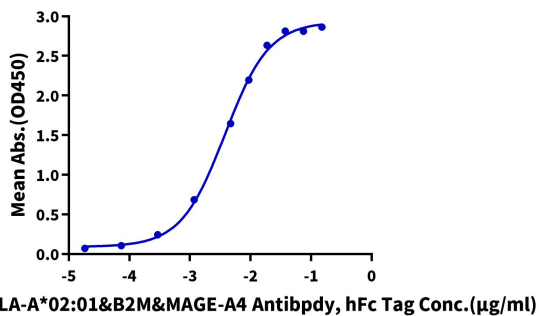


The purity of Human HLA-A\*02:01&B2M&MAGE-A4 (GVYDGREHTV) Tetramer is greater than 95% as determined by SEC-HPLC.

ELISA Data

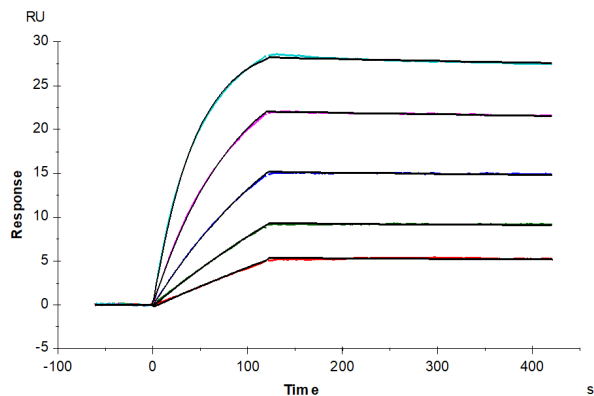
Human HLA-A\*02:01&B2M&MAGE-A4 (GVYDGREHTV) Tetramer, HisTag ELISA

0.1µg Human HLA-A\*02:01&B2M&MAGE-A4 (GVYDGREHTV) Tetramer, His Tag Per Well



Immobilized Human HLA-A\*02:01&B2M&MAGE-A4 (GVYDGREHTV) Tetramer, His Tag at 1µg/ml (100µl/Well) on the plate. Dose response curve for Anti-HLA-A\*02:01&B2M&MAGE-A4 (GVYDGREHTV) Antibody, hFc Tag with the EC50 of 3.8ng/ml determined by ELISA (QC Test).

SPR Data



Anti-HLA-A\*02:01&B2M&MAGE-A4 (GVYDGREHTV) Antibody, hFc Tag captured on CM5 Chip via Protein A can bind Human HLA-A\*02:01&B2M&MAGE-A4 (GVYDGREHTV) Tetramer, His Tag with an affinity constant of 8.49pM as determined in SPR assay (Biacore T200).