

Cat. No. MHC-HM402B

Description	
Source	Recombinant Biotinylated Human HLA-A*02:01&B2M&GP100 (YLEPGPVTA) Monomer Protein is expressed from HEK293 with His tag and Avi tag at the C-Terminus. It contains Gly25-Thr305(HLA-A*02:01), Ile21-Met119(B2M) and YLEPGPVTA peptide.
Accession	A0A140T913(HLA-A*02:01)&P61769(B2M)&YLEPGPVTA
Molecular Weight	The protein has a predicted MW of 50.4 kDa. Due to glycosylation, the protein migrates to 52-62 kDa based on Bis-Tris PAGE result.
Endotoxin	Less than 1EU per µg by the LAL method.
Purity	> 95% as determined by Bis-Tris PAGE > 95% as determined by HPLC

Formulation and Storage

Formulation	Lyophilized from 0.22µm filtered solution in PBS (pH 7.4). Normally 8% trehalose is added as protectant before lyophilization.
Reconstitution	Centrifuge the tube before opening. Reconstituting to a concentration more than 100 µg/ml is recommended. Dissolve the lyophilized protein in distilled water.
Storage	-20 to -80°C for 24 months as supplied from date of receipt. -80°C for 3 months after reconstitution. Recommend to aliquot the protein into smaller quantities for optimal storage. Please minimize freeze-thaw cycles.

Background

Glycoprotein 100, gp100 or Melanocyte protein PMEL is 661 amino acids long and is a type I transmembrane glycoprotein enriched in melanosomes, which are the melanin-producing organelles in melanocytes. This protein is involved in melanosome maturation. The Human HLA-A*0201 gp100 (YLEPGPVTA) complex Protein is a complex of HLA-A*0201 of the MHC Class I and YLEPGPVTA peptide of the gp100.

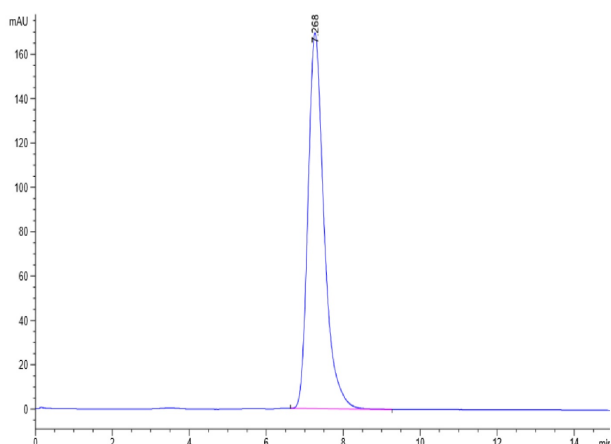
Assay Data

Bis-Tris PAGE



Biotinylated Human HLA-A*02:01&B2M&GP100 (YLEPGPVTA) Monomer on Bis-Tris PAGE under reduced condition. The purity is greater than 95%.

SEC-HPLC



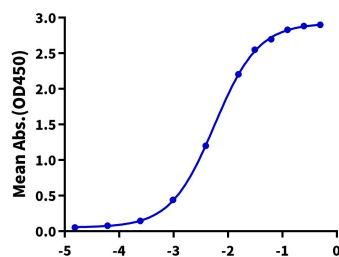
The purity of Biotinylated Human HLA-A*02:01&B2M&GP100 (YLEPGPVTA) Monomer was greater than 95% as determined by SEC-HPLC.

Assay Data

ELISA Data

Biotinylated Human HLA-A*02:01&B2M&GP100 (YLEPGPVTA) Monomer, His Tag ELISA

0.2µg Biotinylated Human HLA-A*02:01&B2M&GP100 (YLEPGPVTA) Monomer, His Tag Per Well



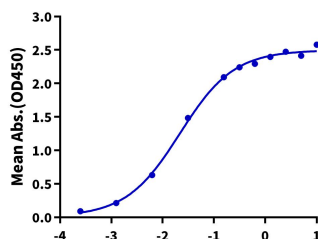
Log Anti-HLA-A*02:01&B2M&GP100 Antibody, hFc Tag Conc.(µg/ml)

Immobilized Biotinylated Human HLA-A*02:01&B2M&GP100 (YLEPGPVTA) Monomer, His Tag at 2µg/ml (100µl/well) on the streptavidin precoated plate (5µg/ml). Dose response curve for Anti-HLA-A*02:01&B2M&GP100 (YLEPGPVTA) Antibody, hFc Tag with the EC50 of 5.7ng/ml determined by ELISA (QC Test).

ELISA Data

Biotinylated Human HLA-A*02:01&B2M&GP100 (YLEPGPVTA), His-Avi Tag ELISA

0.2µg Tebentafusp, No Tag Per Well



Log Biotinylated Human HLA-A*02:01&B2M&GP100 (YLEPGPVTA), His-Avi Tag Conc.(µg/ml)

Immobilized Tebentafusp, No Tag at 2µg/ml (100µl/well) on the plate. Dose response curve for Biotinylated Human HLA-A*02:01&B2M&GP100 (YLEPGPVTA) Monomer, His-Avi Tag with the EC50 of 21.7ng/ml determined by ELISA.