

Human GP100 (HLA-A*02:01) Tetramer Protein

Cat. No. MHC-HM402T

Description

Source	Recombinant Human GP100 (HLA-A*02:01) Tetramer Protein is expressed from Expi293 with His tag and Avi tag at the C-terminal, tetramer is assembled by biotinylated monomer and streptavidin. It contains Gly25-Thr305(HLA-A*02:01), Ile21-Met119(B2M) and YLEPGPVTA peptide.
Accession	A0A140T913(HLA-A*02:01)&P61769(B2M)&YLEPGPVTA
Molecular Weight	The protein has a predicted MW of 258 kDa. Due to glycosylation, the protein migrates to 260-265 kDa under Non reducing (N) condition based on Tris-Bis PAGE result.
Endotoxin	Less than 1EU per µg by the LAL method.
Purity	> 95% as determined by Tris-Bis PAGE > 95% as determined by HPLC

Formulation and Storage

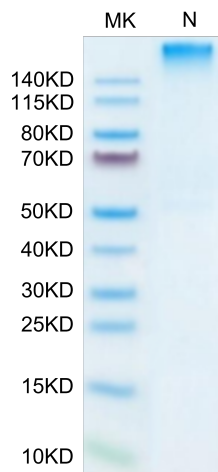
Formulation	Lyophilized from 0.22µm filtered solution in PBS (pH 7.4). Normally 8% trehalose is added as protectant before lyophilization.
Reconstitution	Centrifuge tubes before opening. Reconstituting to a concentration more than 100 µg/ml is recommended. Dissolve the lyophilized protein in distilled water.
Storage	-20 to -80°C for 12 months as supplied from date of receipt. -20 to -80°C for 3-6 months in unopened state after reconstitution. 2-8°C for 2-7 days after reconstitution. Recommend to aliquot the protein into smaller quantities for optimal storage. Please avoid freeze-thaw cycles.

Background

Glycoprotein 100, gp100 or Melanocyte protein PMEL is 661 amino acids long and is a type I transmembrane glycoprotein enriched in melanosomes, which are the melanin-producing organelles in melanocytes. This protein is involved in melanosome maturation. The Human HLA-A*0201 gp100 (YLEPGPVTA) complex Protein is a complex of HLA-A*0201 of the MHC Class I, B2M and YLEPGPVTA peptide of the gp100.

Assay Data

Tris-Bis PAGE



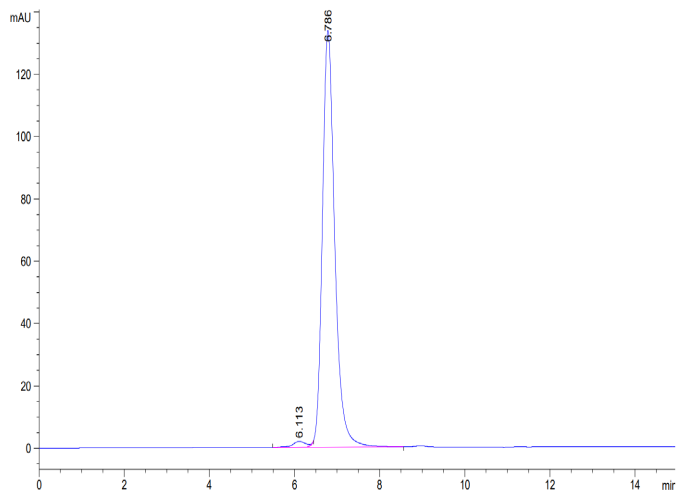
Human GP100 (HLA-A*02:01) Tetramer on Tris-Bis PAGE under Non reducing (N) condition. The purity is greater than 95%.

SEC-HPLC

Human GP100 (HLA-A*02:01) Tetramer Protein

Cat. No. MHC-HM402T

Assay Data

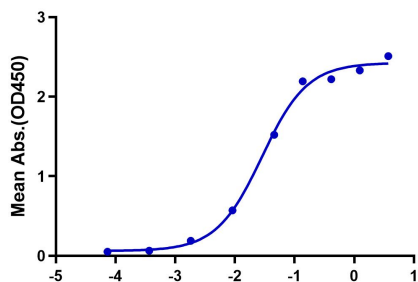


The purity of Human GP100 (HLA-A*02:01) Tetramer was greater than 95% as determined by SEC-HPLC.

ELISA Data

Human GP100 (HLA-A*02:01) Complex Tetramer, His Tag ELISA

0.2µg Human GP100 (HLA-A*02:01) Complex Tetramer, His Tag Per Well



Immobilized Human GP100 (HLA-A*02:01) Tetramer, His Tag at 2µg/ml (100µl/Well) on the plate. Dose response curve for Anti-GP100 (HLA-A*02:01) Antibody, hFc Tag with the EC50 of 28.3ng/ml determined by ELISA.