

Cat. No. MHC-HM405-UL

Description

| | |
|-------------------------|--|
| Source | Recombinant Human HLA-A*02:01&B2M&NY-ESO-1 (SLLMWITQC) Monomer Protein is expressed from HEK293 with His tag and Avi tag at the C-Terminus. It contains Gly25-Thr305(HLA-A*02:01), Ile21-Met119(B2M) and SLLMWITQC peptide. |
| Accession | A0A140T913(HLA-A*02:01)&P61769(B2M)&SLLMWITQC |
| Molecular Weight | The protein has a predicted MW of 50.5 kDa. Due to glycosylation, the protein migrates to 51-60 kDa based on Bis-Tris PAGE result. |
| Endotoxin | Less than 0.01 EU per µg by the LAL method. |
| Purity | > 95% as determined by Bis-Tris PAGE > 95% as determined by HPLC |

Formulation and Storage

| | |
|-----------------------|---|
| Formulation | Lyophilized from 0.22µm filtered solution in PBS, 100mM L-arginine (pH 7.4). Normally 8% trehalose is added as protectant before lyophilization. |
| Reconstitution | Dissolve the lyophilized protein in distilled water. Please refer to the Certificate of Analysis for detailed instructions. |
| Storage | -20 to -80°C for 12 months as supplied from date of receipt. -80°C for 3 months after reconstitution. Recommend to aliquot the protein into smaller quantities for optimal storage. Please minimize freeze-thaw cycles. |

Background

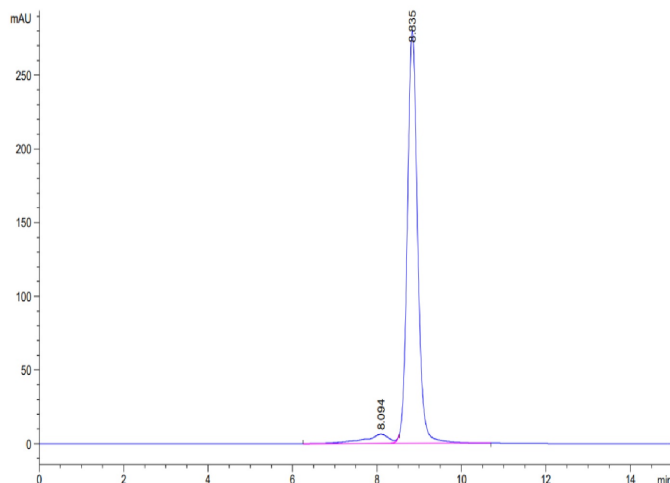
NY-ESO-1 or New York esophageal squamous cell carcinoma 1 is a well-known cancer-testis antigen (CTAs) with re-expression in numerous cancer types. Its ability to elicit spontaneous humoral and cellular immune responses, together with its restricted expression pattern, have rendered it a good candidate target for cancer immunotherapy.

Assay Data**Bis-Tris PAGE**

Human HLA-A*02:01&B2M&NY-ESO-1 (SLLMWITQC) Monomer on Bis-Tris PAGE under reduced condition. The purity is greater than 95%.

SEC-HPLC

Assay Data

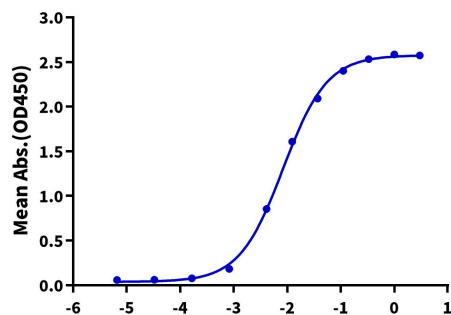


The purity of Human HLA-A*02:01&B2M&NY-ESO-1 (SLLMWITQC) Monomer was greater than 95% as determined by SEC-HPLC.

ELISA Data

Human HLA-A*02:01&B2M&NY-ESO-1 Monomer, His Tag ELISA

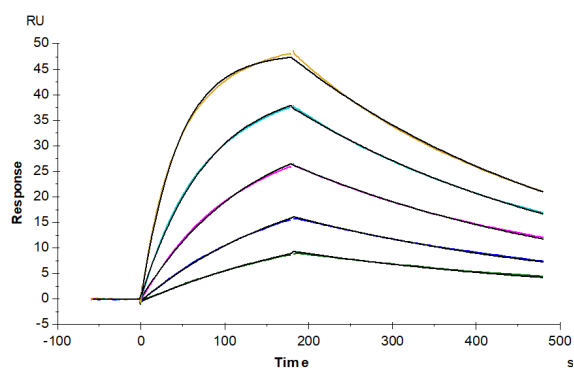
0.5µg Anti-HLA-A*02:01&B2M&NY-ESO-1 Antibody, hFc Tag Per Well



Immobilized Anti-HLA-A*02:01&B2M&NY-ESO-1 (SLLMWITQC) Antibody, hFc Tag at 5µg/ml (100µl/well) on the plate. Dose response curve for Human HLA-A*02:01&B2M&NY-ESO-1 (SLLMWITQC) Monomer, His Tag with the EC50 of 8.4ng/ml determined by ELISA (QC Test).

Log Human HLA-A*02:01&B2M&NY-ESO-1 Monomer, His Tag Conc.(µg/ml)

SPR Data



Anti-HLA-A*02:01&B2M&NY-ESO-1 (SLLMWITQC) Antibody, hFc Tag captured on CM5 Chip via Protein A can bind Human HLA-A*02:01&B2M&NY-ESO-1 (SLLMWITQC) Monomer, His Tag with an affinity constant of 13.43 nM as determined in SPR assay (Biacore T200).