

Human HLA-A*02:01&B2M&NY-ESO-1 (SLLMWITQC) Monomer Protein

Cat. No. MHC-HM405

Description

Source	Recombinant Human HLA-A*02:01&B2M&NY-ESO-1 (SLLMWITQC) Monomer Protein is expressed from HEK293 with His tag and Avi tag at the C-Terminus. It contains Gly25-Thr305(HLA-A*02:01), Ile21-Met119(B2M) and SLLMWITQC peptide.
Accession	A0A140T913(HLA-A*02:01)&P61769(B2M)&SLLMWITQC
Molecular Weight	The protein has a predicted MW of 50.5 kDa. Due to glycosylation, the protein migrates to 51-60 kDa based on Bis-Tris PAGE result.
Endotoxin	Less than 1EU per µg by the LAL method.
Purity	> 95% as determined by Bis-Tris PAGE > 95% as determined by HPLC

Formulation and Storage

Formulation	Supplied as 0.22µm filtered solution in 20mM Tris, 500mM NaCl (pH 7.4).
Storage	Valid for 12 months from date of receipt when stored at -80°C. Recommend to aliquot the protein into smaller quantities for optimal storage. Please minimize freeze-thaw cycles.

Background

NY-ESO-1 or New York esophageal squamous cell carcinoma 1 is a well-known cancer-testis antigen (CTAs) with re-expression in numerous cancer types. Its ability to elicit spontaneous humoral and cellular immune responses, together with its restricted expression pattern, have rendered it a good candidate target for cancer immunotherapy.

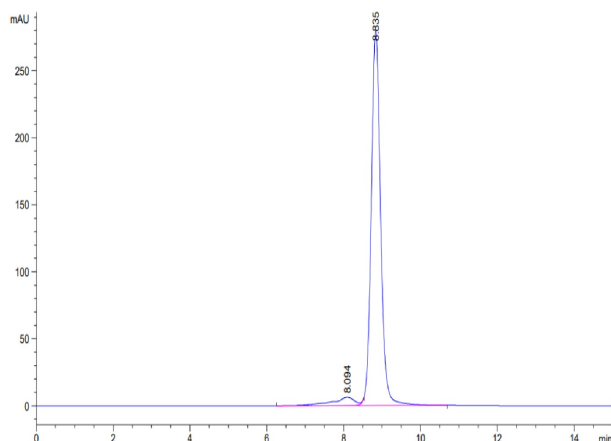
Assay Data

Bis-Tris PAGE



Human HLA-A*02:01&B2M&NY-ESO-1 (SLLMWITQC) Monomer on Bis-Tris PAGE under reduced condition. The purity is greater than 95%.

SEC-HPLC



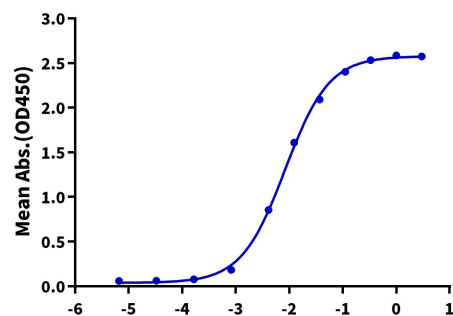
The purity of Human HLA-A*02:01&B2M&NY-ESO-1 (SLLMWITQC) Monomer was greater than 95% as determined by SEC-HPLC.

Assay Data

ELISA Data

Human HLA-A*02:01&B2M&NY-ESO-1 Monomer, His Tag ELISA

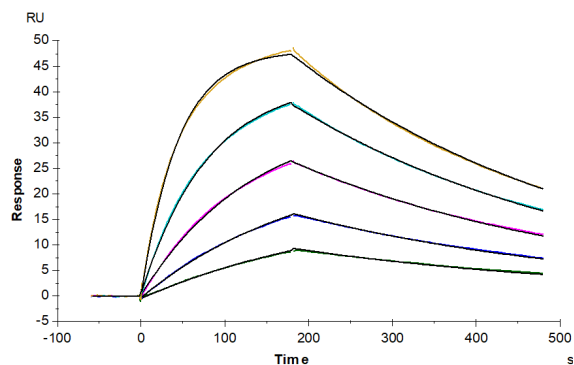
0.5µg Anti-HLA-A*02:01&B2M&NY-ESO-1 Antibody, hFc Tag Per Well



Immobilized Anti-HLA-A*02:01&B2M&NY-ESO-1 (SLLMWITQC) Antibody, hFc Tag at 5µg/ml (100µl/well) on the plate. Dose response curve for Human HLA-A*02:01&B2M&NY-ESO-1 (SLLMWITQC) Monomer, His Tag with the EC50 of 8.4ng/ml determined by ELISA (QC Test).

Log Human HLA-A*02:01&B2M&NY-ESO-1 Monomer, His Tag Conc.(µg/ml)

SPR Data



Anti-HLA-A*02:01&B2M&NY-ESO-1 (SLLMWITQC) Antibody, hFc Tag captured on CM5 Chip via Protein A can bind Human HLA-A*02:01&B2M&NY-ESO-1 (SLLMWITQC) Monomer, His Tag with an affinity constant of 13.43 nM as determined in SPR assay (Biacore T200).