

Human HLA-A*02:01&B2M&NY-ESO-1 (SLLMWITQC) Tetramer Protein



Cat. No. MHC-HM405T

Description

Source	Recombinant Human HLA-A*02:01&B2M&NY-ESO-1 (SLLMWITQC) Tetramer Protein is expressed from HEK293 with His tag and Avi tag at the C-Terminus, tetramer is assembled by biotinylated monomer and streptavidin. It contains Gly25-Thr305 (HLA-A*02:01), Ile21-Met119 (B2M) and SLLMWITQC peptide.
Accession	A0A140T913(HLA-A*02:01)&P61769(B2M)&SLLMWITQC
Molecular Weight	The protein has a predicted MW of 258 kDa. Due to glycosylation, the protein migrates to 260-265 kDa under Non reducing (N) condition based on Bis-Tris PAGE result.
Endotoxin	Less than 1 EU per µg by the LAL method.
Purity	>95% as determined by Bis-Tris PAGE >95% as determined by HPLC

Formulation and Storage

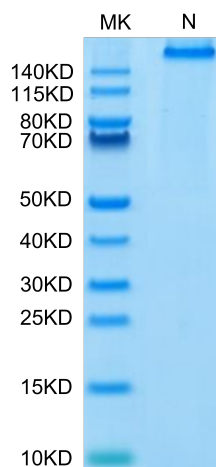
Formulation	Supplied as 0.22 µm filtered solution in 20 mM PB, 500 mM NaCl (pH 7.4).
Storage	Valid for 12 months from date of receipt when stored at -80°C. Recommend to aliquot the protein into smaller quantities for optimal storage. Please minimize freeze-thaw cycles.

Background

NY-ESO-1 or New York esophageal squamous cell carcinoma 1 is a well-known cancer-testis antigen (CTAs) with re-expression in numerous cancer types. Its ability to elicit spontaneous humoral and cellular immune responses, together with its restricted expression pattern, have rendered it a good candidate target for cancer immunotherapy.

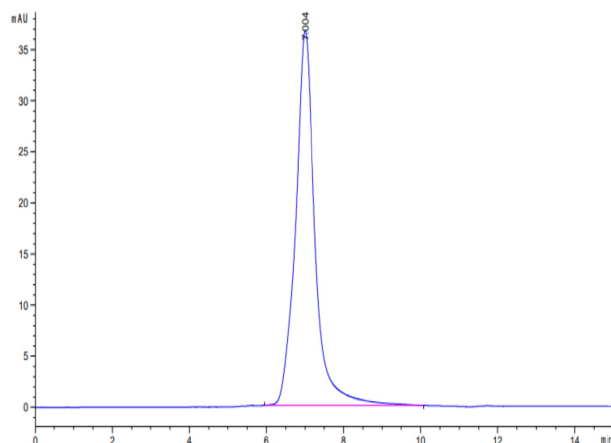
Assay Data

Bis-Tris PAGE



Human HLA-A*02:01&B2M&NY-ESO-1 (SLLMWITQC) Tetramer on Bis-Tris PAGE under Non reducing (N) condition. The purity is greater than 95%.

SEC-HPLC



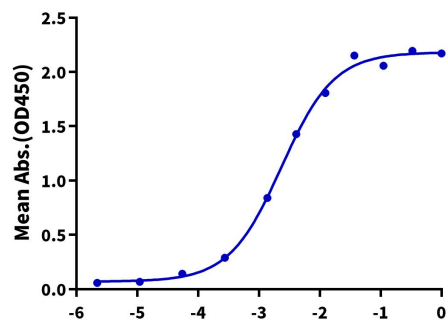
The purity of Human HLA-A*02:01&B2M&NY-ESO-1 (SLLMWITQC) Tetramer was greater than 95% as determined by SEC-HPLC.

Assay Data

ELISA Data

Human HLA-A*02:01&B2M&NY-ESO-1 Tetramer, His Tag ELISA

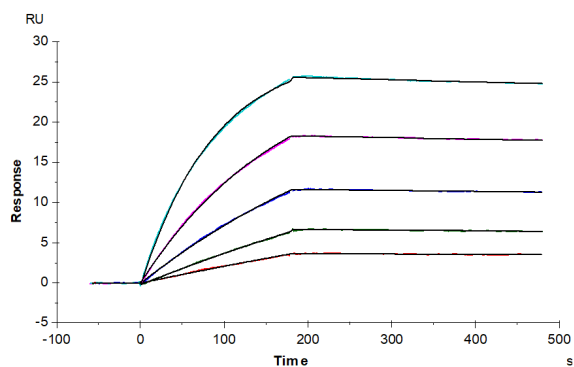
0.5µg Human HLA-A*02:01&B2M&NY-ESO-1 Tetramer, His Tag Per Well



Log Anti-HLA-A*02:01&B2M&NY-ESO-1 Antibody, hFc Tag Conc.(µg/ml)

Immobilized Human HLA-A*02:01&B2M&NY-ESO-1 (SLLMWITQC) Tetramer, His Tag at 5 µg/ml (100 µl/Well) on the plate. Dose response curve for Anti-HLA-A*02:01&B2M&NY-ESO-1 (SLLMWITQC) Antibody, hFc Tag with the EC50 of 2.3 ng/ml determined by ELISA (QC Test).

SPR Data



Anti-HLA-A*02:01&B2M&NY-ESO-1 (SLLMWITQC) Antibody, hFc Tag captured on CM5 Chip via Protein A can bind Human HLA-A*02:01&B2M&NY-ESO-1 (SLLMWITQC) Tetramer, His Tag with an affinity constant of 0.09 nM as determined in SPR assay (Biacore T200).