

# Human HLA-E\*01:03&B2M&Peptide (VMAPRTLVL) Monomer Protein

Cat. No. MHC-HM406

## Description

<b>Source</b>	Recombinant Human HLA-E*01:03&B2M&Peptide (VMAPRTLVL) Monomer Protein is expressed from HEK293 with His tag and Avi at the C-Terminus. It contains Gly22-Thr302(HLA-E*01:03), Ile21-Met119(B2M) and VMAPRTLVL peptide.
<b>Accession</b>	P13747(HLA-E*01:03)&P61769(B2M)&VMAPRTLVL
<b>Molecular Weight</b>	The protein has a predicted MW of 50.2 kDa. Due to glycosylation, the protein migrates to 52-60 kDa based on Bis-Tris PAGE result.
<b>Endotoxin</b>	Less than 1EU per µg by the LAL method.
<b>Purity</b>	> 95% as determined by Bis-Tris PAGE > 95% as determined by HPLC

## Formulation and Storage

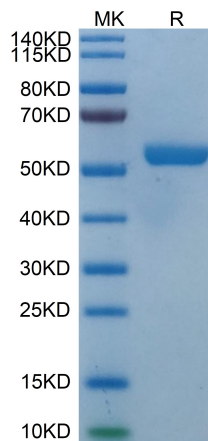
<b>Formulation</b>	Lyophilized from 0.22µm filtered solution in PBS (pH 7.4). Normally 8% trehalose is added as protectant before lyophilization.
<b>Reconstitution</b>	Centrifuge the tube before opening. Reconstituting to a concentration more than 100 µg/ml is recommended. Dissolve the lyophilized protein in distilled water.
<b>Storage</b>	-20 to -80°C for 12 months as supplied from date of receipt. -80°C for 3 months after reconstitution. Recommend to aliquot the protein into smaller quantities for optimal storage. Please minimize freeze-thaw cycles.

## Background

HLA-E is a nonclassical member of the major histocompatibility complex class I gene locus. HLA-E protein shares a high level of homology with MHC Ia classical proteins: it has similar tertiary structure, associates with β2-microglobulin, and is able to present peptides to cytotoxic lymphocytes. The main function of HLA-E under normal conditions is to present peptides derived from the leader sequences of classical HLA class I proteins, thus serving for monitoring of expression of these molecules performed by cytotoxic lymphocytes.

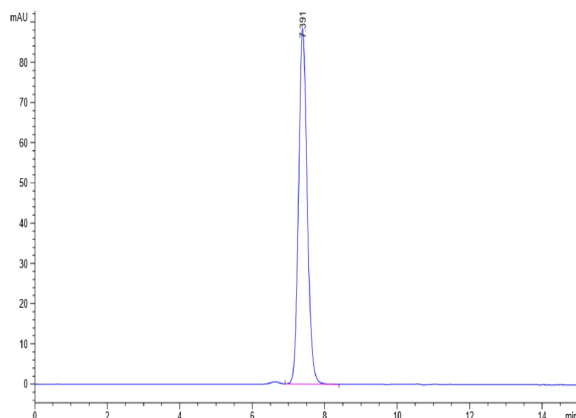
## Assay Data

### Bis-Tris PAGE



Human HLA-E\*01:03&B2M&Peptide (VMAPRTLVL) Monomer on Bis-Tris PAGE under reduced condition. The purity is greater than 95%.

### SEC-HPLC



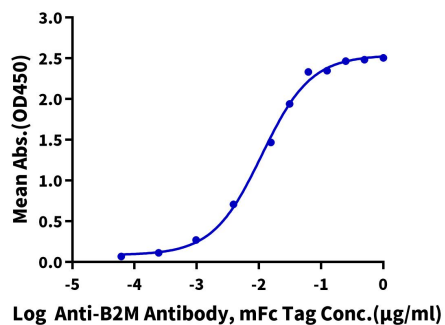
The purity of Human HLA-E\*01:03&B2M&Peptide (VMAPRTLVL) Monomer is greater than 95% as determined by SEC-HPLC.

Assay Data

ELISA Data

Human HLA-E\*01:03&B2M&Peptide (VMAPRTLVL) Monomer, His Tag ELISA

0.1µg Human HLA-E\*01:03&B2M&Peptide (VMAPRTLVL) Monomer, His Tag Per Well



Immobilized Human HLA-E\*01:03&B2M&Peptide (VMAPRTLVL) Monomer, His Tag at 1µg/ml(100µl/well) on the plate. Dose response curve for Anti-B2M Antibody, mFc Tag with the EC50 of 11.1ng/ml determined by ELISA (QC Test).