

# Biotinylated Human HLA-A\*02:01&B2M&NY-ESO-1 (SLLMWITQV) Monomer Protein



Cat. No. MHC-HM40NB

## Description

<b>Source</b>	Recombinant Biotinylated Human HLA-A*02:01&B2M&NY-ESO-1 (SLLMWITQV) Monomer Protein is expressed from HEK293 with His tag and Avi tag at the C-Terminus. It contains Gly25-Thr305(HLA-A*02:01), Ile21-Met119(B2M) and SLLMWITQV peptide.
<b>Accession</b>	A0A140T913(HLA-A*02:01)&P61769(B2M)&SLLMWITQV
<b>Molecular Weight</b>	The protein has a predicted MW of 50.5 kDa. Due to glycosylation, the protein migrates to 51-56 kDa based on Bis-Tris PAGE result.
<b>Endotoxin</b>	Less than 1EU per µg by the LAL method.
<b>Purity</b>	> 95% as determined by Bis-Tris PAGE > 95% as determined by HPLC

## Formulation and Storage

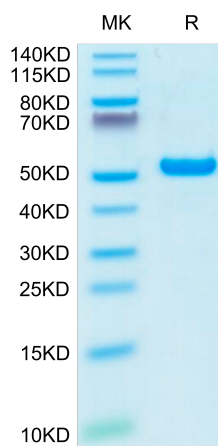
<b>Formulation</b>	Lyophilized from 0.22µm filtered solution in PBS (pH 7.4). Normally 8% trehalose is added as protectant before lyophilization.
<b>Reconstitution</b>	Centrifuge the tube before opening. Reconstituting to a concentration more than 100 µg/ml is recommended. Dissolve the lyophilized protein in distilled water.
<b>Storage</b>	-20 to -80°C for 12 months as supplied from date of receipt. -80°C for 3 months after reconstitution. Recommend to aliquot the protein into smaller quantities for optimal storage. Please minimize freeze-thaw cycles.

## Background

NY-ESO-1 or New York esophageal squamous cell carcinoma 1 is a well-known cancer-testis antigen (CTAs) with re-expression in numerous cancer types. Its ability to elicit spontaneous humoral and cellular immune responses, together with its restricted expression pattern, have rendered it a good candidate target for cancer immunotherapy.

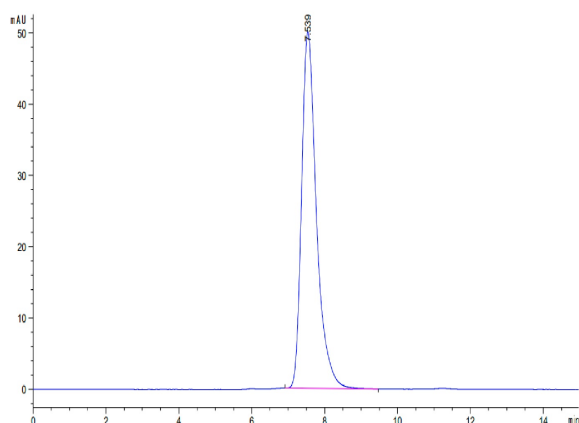
## Assay Data

### Bis-Tris PAGE



Biotinylated Human HLA-A\*02:01&B2M&NY-ESO-1 (SLLMWITQV) Monomer on Bis-Tris PAGE under reduced condition. The purity is greater than 95%.

### SEC-HPLC



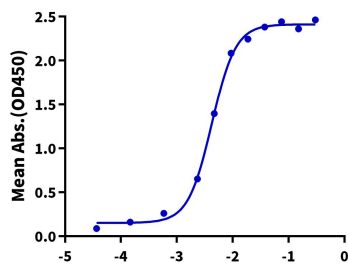
The purity of Biotinylated Human HLA-A\*02:01&B2M&NY-ESO-1 (SLLMWITQV) Monomer is greater than 95% as determined by SEC-HPLC.

Assay Data

ELISA Data

**Biotinylated Human HLA-A\*02:01&B2M&NY-ESO-1 (SLLMWITQV), His-Avi Tag ELISA**

0.05µg Biotinylated Human HLA-A\*02:01&B2M&NY-ESO-1 (SLLMWITQV), His-Avi Tag Per Well



Log Anti-HLA-A\*02:01&B2M&NY-ESO-1 Antibody, hFc Tag Conc. (µg/ml)

Immobilized Biotinylated Human HLA-A\*02:01&B2M&NY-ESO-1 (SLLMWITQV) Monomer, His-Avi Tag at 0.5µg/ml (100µl/well) on the streptavidin precoated plate (5µg/ml). Dose response curve for Anti-HLA-A\*02:01&B2M&NY-ESO-1 (SLLMWITQV) Antibody, hFc Tag with the EC50 of 4.2ng/ml determined by ELISA (QC Test).