

# Biotinylated Human LMP2 (HLA-A\*02:01) Protein

Cat. No. MHC-HM411B

## Description

<b>Source</b>	Recombinant Biotinylated Human LMP2 (HLA-A*02:01) Protein is expressed from Expi293 with His tag and Avi tag at the C-terminal. It contains Gly25-Thr305(HLA-A*02:01),Ile21-Met119(B2M) and CLGGLLTMV peptide.
<b>Accession</b>	A0A140T913(HLA-A*02:01)&P61769(B2M)&CLGGLLTMV
<b>Molecular Weight</b>	The protein has a predicted MW of 50.3 kDa. Due to glycosylation, the protein migrates to 51-60 kDa based on Tris-Bis PAGE result.
<b>Endotoxin</b>	Less than 1EU per µg by the LAL method.
<b>Purity</b>	> 95% as determined by Tris-Bis PAGE > 95% as determined by HPLC

## Formulation and Storage

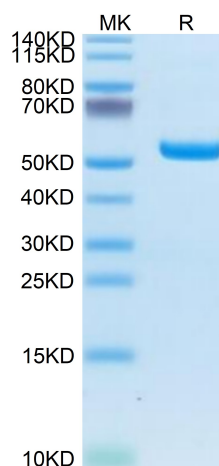
<b>Formulation</b>	Lyophilized from 0.22µm filtered solution in PBS (pH 7.4). Normally 8% trehalose is added as protectant before lyophilization.
<b>Reconstitution</b>	Centrifuge tubes before opening. Reconstituting to a concentration more than 100 µg/ml is recommended. Dissolve the lyophilized protein in distilled water.
<b>Storage</b>	-20 to -80°C for 12 months as supplied from date of receipt. -20 to -80°C for 3-6 months in unopened state after reconstitution. 2-8°C for 2-7 days after reconstitution. Recommend to aliquot the protein into smaller quantities for optimal storage. Please avoid freeze-thaw cycles.

## Background

The immunoproteasome, having been linked to neurodegenerative diseases and hematological cancers, has been shown to play an important role in MHC class I antigen presentation. The development of molecular probes that selectively inhibit the major catalytic subunit, LMP2, of the immunoproteasome, LMP2-rich cancer cells compared to LMP2-deficient cancer cells are more sensitive to growth inhibition by the LMP2-specific inhibitor, implicating an important role of LMP2 in regulating cell growth of malignant tumors that highly express LMP2.

## Assay Data

### Tris-Bis PAGE



Biotinylated Human LMP2 (HLA-A\*02:01) on Tris-Bis PAGE under reduced condition. The purity is greater than 95%.

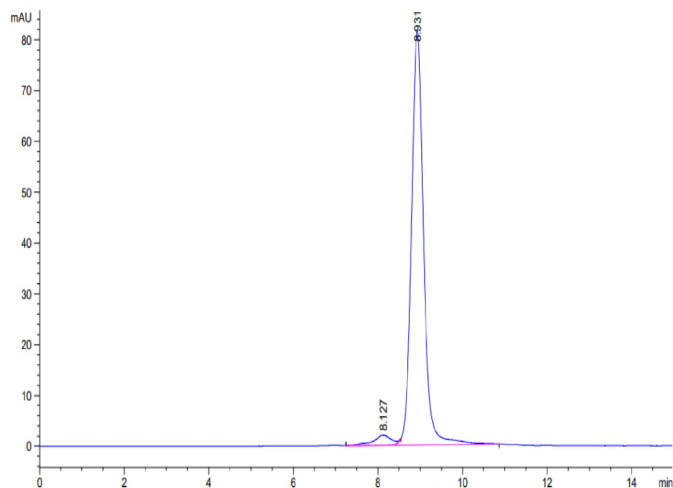
### SEC-HPLC

# Biotinylated Human LMP2 (HLA-A\*02:01) Protein

Cat. No. MHC-HM411B



## Assay Data



The purity of Biotinylated Human LMP2 (HLA-A\*02:01) is greater than 95% as determined by SEC-HPLC.