

Cat. No. MHC-HM412B

**Description**

<b>Source</b>	Recombinant Biotinylated Human HLA-A*02:01&B2M&Survivin (LMLGEFLKL) Monomer Protein is expressed from HEK293 with His tag and Avi tag at the C-Terminus. It contains Gly25-Thr305(HLA-A*02:01),Ile21-Met119(B2M) and LMLGEFLKL peptide.
<b>Accession</b>	A0A140T913(HLA-A*02:01)&P61769(B2M)&LMLGEFLKL
<b>Molecular Weight</b>	The protein has a predicted MW of 50.5 kDa. Due to glycosylation, the protein migrates to 55-63 kDa based on Bis-Tris PAGE result.
<b>Endotoxin</b>	Less than 1 EU per µg by the LAL method.
<b>Purity</b>	>95% as determined by Bis-Tris PAGE >95% as determined by HPLC

**Formulation and Storage**

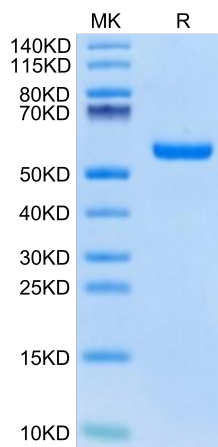
<b>Formulation</b>	Lyophilized from 0.22 µm filtered solution in PBS (pH 7.4). Normally 8% trehalose is added as protectant before lyophilization.
<b>Reconstitution</b>	Centrifuge the tube before opening. Reconstituting to a concentration more than 100 µg/ml is recommended. Dissolve the lyophilized protein in distilled water.
<b>Storage</b>	-20 to -80°C for 12 months as supplied from date of receipt. -80°C for 3 months after reconstitution. Recommend to aliquot the protein into smaller quantities for optimal storage. Please minimize freeze-thaw cycles.

**Background**

Survivin (also known as BIRC5) is an evolutionarily conserved eukaryotic protein that is essential for cell division and can inhibit cell death. Normally it is only expressed in actively proliferating cells, but is upregulated in most, if not all cancers; consequently, it has received significant attention as a potential oncotherapeutic target.

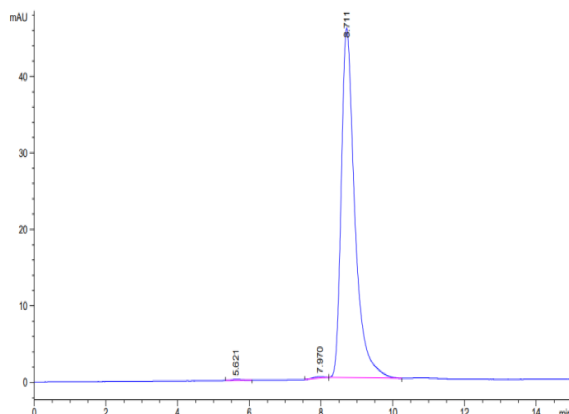
**Assay Data**

**Bis-Tris PAGE**



Biotinylated Human HLA-A\*02:01&B2M&Survivin (LMLGEFLKL) Monomer on Bis-Tris PAGE under reduced condition. The purity is greater than 95%.

**SEC-HPLC**



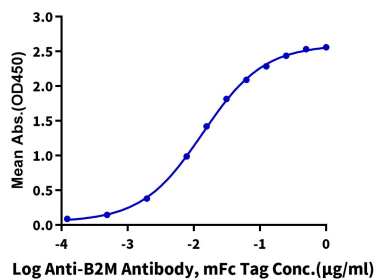
The purity of Biotinylated Human HLA-A\*02:01&B2M&Survivin (LMLGEFLKL) Monomer is greater than 95% as determined by SEC-HPLC.

Assay Data

ELISA Data

**Biotinylated Human HLA-A\*02:01&B2M&Survivin (LMLGEFLKL) Monomer, His Tag ELISA**

0.1µg Biotinylated Human HLA-A\*02:01&B2M&Survivin (LMLGEFLKL) Monomer, His Tag Per Well



Immobilized Biotinylated Human HLA-A\*02:01&B2M&Survivin (LMLGEFLKL) Monomer, His Tag at 1µg/ml (100µl/Well) on streptavidin (5µg/ml) precoated plate. Dose response curve for Anti-B2M Antibody, mFc Tag with the EC50 of 13.6ng/ml determined by ELISA (QC Test).