

Chimeric HLA-A*02:01 ($\alpha 3$) & B2M&WT-1 (RMFPNAPYL) Tetramer Protein



Cat. No. MHC-HM414T

Description	
Source	Recombinant Chimeric HLA-A*02:01($\alpha 3$)&B2M&WT-1 (RMFPNAPYL) Tetramer Protein is expressed from HEK293 with His tag and Avi tag at the C-Terminus, tetramer is assembled by biotinylated monomer and streptavidin. It contains Gly25-Thr206(Human HLA-A*02:01 $\alpha 1$ & $\alpha 2$)&Asp207-Glu299(Mouse H-2Ld $\alpha 3$), Ile21-Met119 (B2M) and RMFPNAPYL peptide.
Accession	A0A140T913(Human HLA-A*02:01 $\alpha 1$ & $\alpha 2$)&P01897(Mouse H-2Ld $\alpha 3$)&P61769(B2M)&RMFPNAPYL
Molecular Weight	The protein has a predicted MW of 258 kDa. Due to glycosylation, the protein migrates to 260-265 kDa under Non reducing (N) condition based on Bis-Tris PAGE result.
Endotoxin	Less than 1EU per ug by the LAL method.
Purity	> 95% as determined by Bis-Tris PAGE > 95% as determined by HPLC

Formulation and Storage

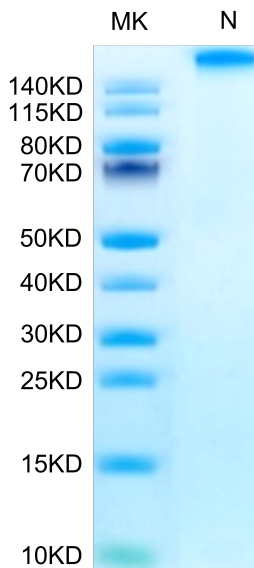
Formulation	Supplied as 0.22 μ m filtered solution in PBS (pH 7.4).
Storage	Valid for 12 months from date of receipt when stored at -80°C. Recommend to aliquot the protein into smaller quantities for optimal storage. Please minimize freeze-thaw cycles.

Background

The WT1 protein plays a role in cell growth, the process by which cells mature to perform specific functions (differentiation), and the self-destruction of cells (apoptosis). WT1 is differentially expressed in serous, endometrioid, clear cell, and mucinous carcinomas of the peritoneum, fallopian tube, ovary, and endometrium. The Human HLA-A*0201 WT-1 (RMFPNAPYL) complex Protein is a complex of HLA-A*0201 of the MHC Class I, B2M and RMFPNAPYL peptide of the WT-1.

Assay Data

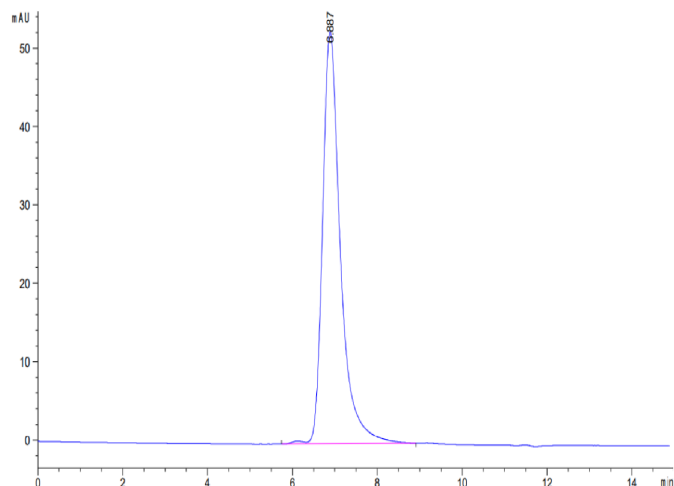
Bis-Tris PAGE



Chimeric HLA-A*02:01 ($\alpha 3$) & B2M&WT-1 (RMFPNAPYL) Tetramer on Bis-Tris PAGE under Non reducing (N) condition. The purity is greater than 95%.

SEC-HPLC

Assay Data

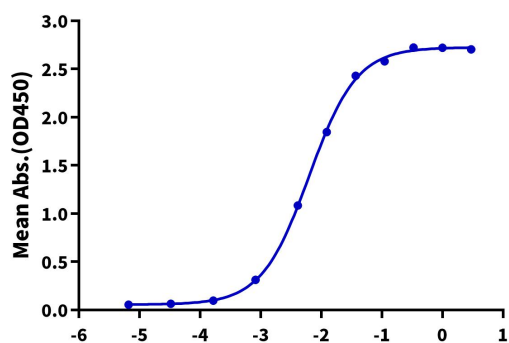


The purity of Chimeric HLA-A*02:01 (α3) &B2M&WT-1 (RMFPNAPYL) Tetramer is greater than 95% as determined by SEC-HPLC.

ELISA Data

Chimeric HLA-A*02:01(α3)&B2M&WT-1 Tetramer, His Tag ELISA

0.2µg Chimeric HLA-A*02:01(α3)&B2M&WT-1 Tetramer, His Tag Per Well



Immobilized Chimeric HLA-A*02:01 (α3) &B2M&WT-1 (RMFPNAPYL) Tetramer, His Tag at 2µg/ml (100µl/well) on the plate. Dose response curve for Anti-HLA-A*02:01&B2M&WT-1 (RMFPNAPYL) Antibody, hFc Tag with the EC50 of 6.3ng/ml determined by ELISA.

Log Anti-HLA-A*02:01&B2M&WT-1 Antibody, hFc Tag Conc.(µg/ml)